



WOOD CHIPPER G3 PULLEY WITH TAPER LOCK BUSHING

Code 76.7025

Version 04122025



Keep this manual for future reference!

If you need any spare parts, please send this packaging data to your local dealer or to Iron Baltic
sales@ironbaltic.com

SPECIFICATION

Pos.	Description	Code	Amount
1	Pulley SPB 150-2-2012	76.7018ML	1
2	Taper Lock bushing TB 2012-35	76.7019ML	1
3	Set screw		2



TOOLS REQUIRED FOR INSTALLATION:

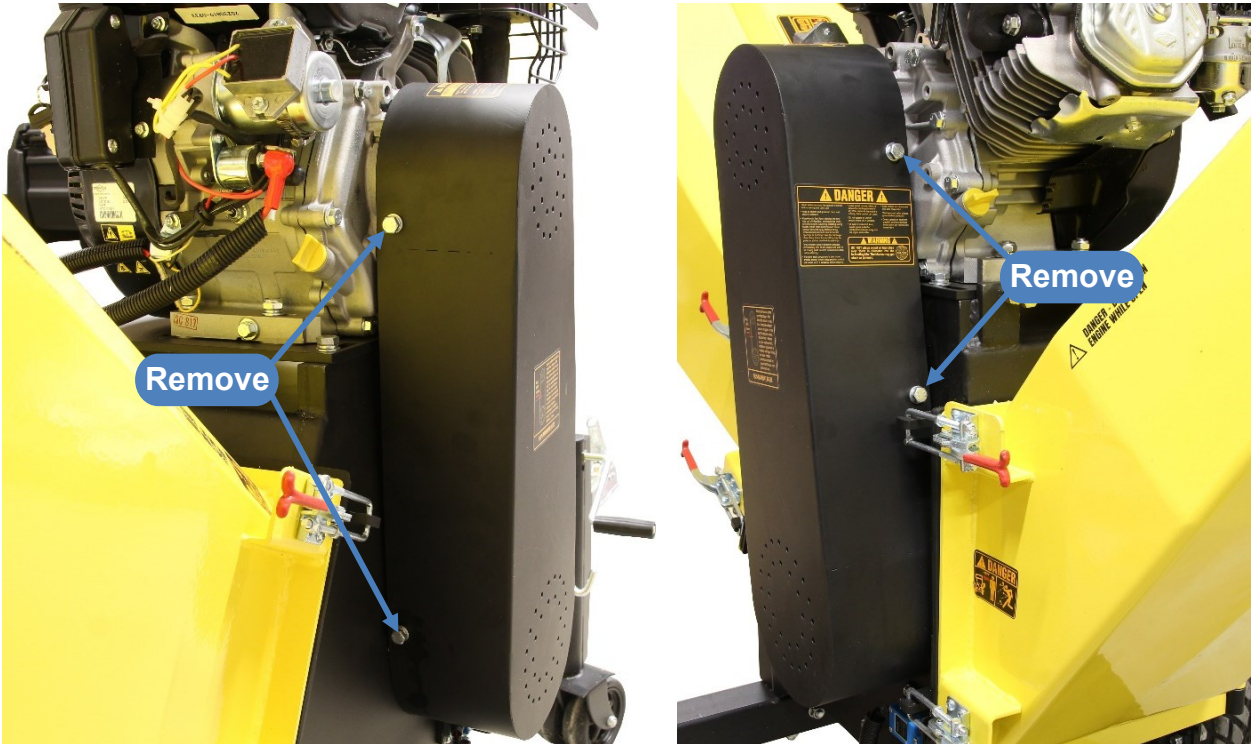
- Spanner 13mm
- Spanner 16mm
- Allen key 5mm
- Flat head screwdriver

FITTING INSTRUCTIONS

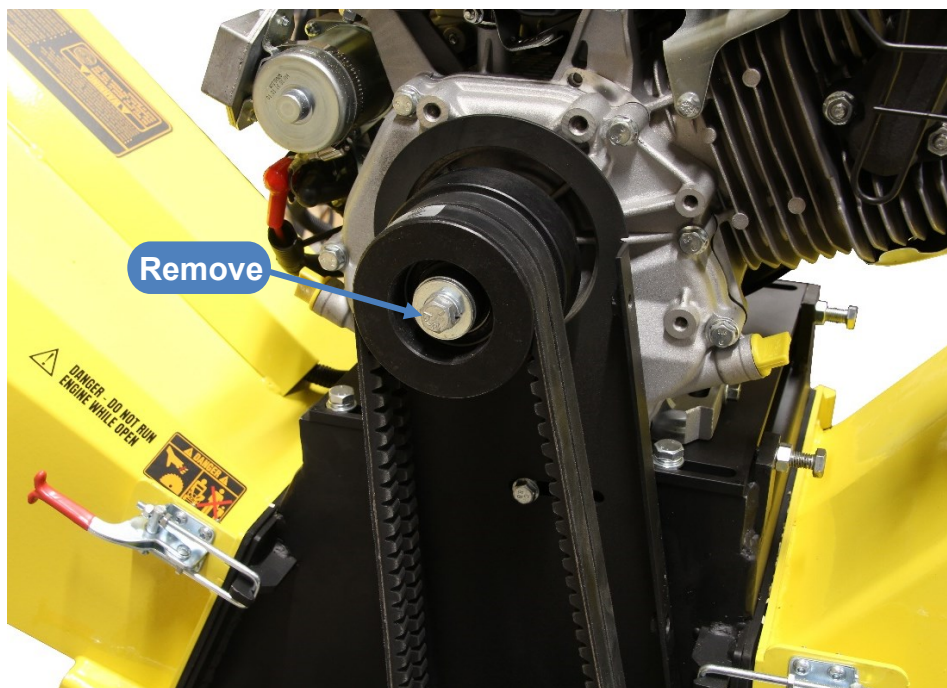


Before performing any maintenance procedure or inspection, stop the engine, wait at least five minutes to allow all parts to cool. Disconnect the spark plug wire, keeping it away from the spark plug.

Step 1 Remove the drive belt guard bolts.

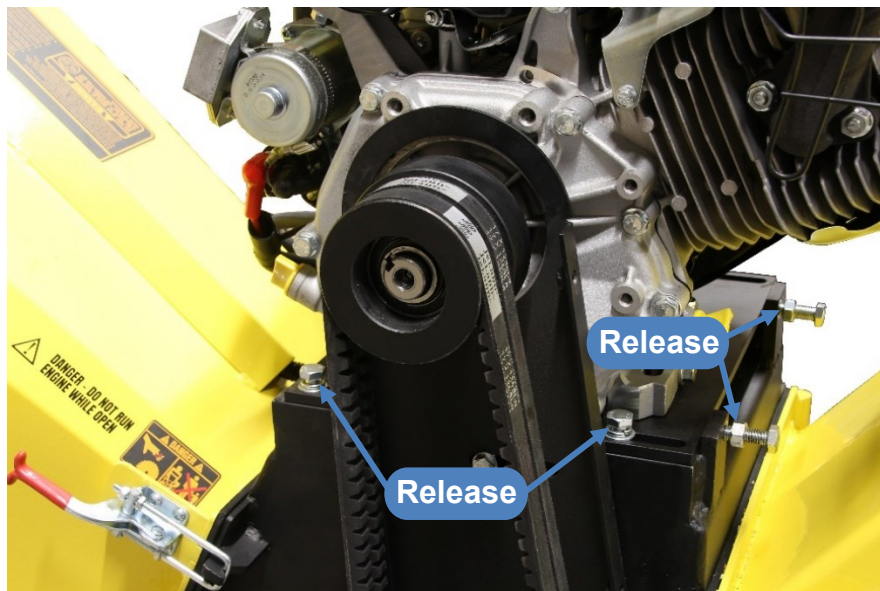


Step 2 Remove the clutch bolt together with washers and centering bush.



Step 3

Release belt side engine bolts and belt tensioning bolts (do not remove).



Step 4

Remove the two remaining engine bolts on the other side of the engine. Removing these bolts will simplify clutch removal and installation.



Step 5

Place a flat-head screwdriver between the engine mounting plate and the baseplate to lift the engine.



Step 6

Remove the clutch together with drive belts. Use puller if needed.



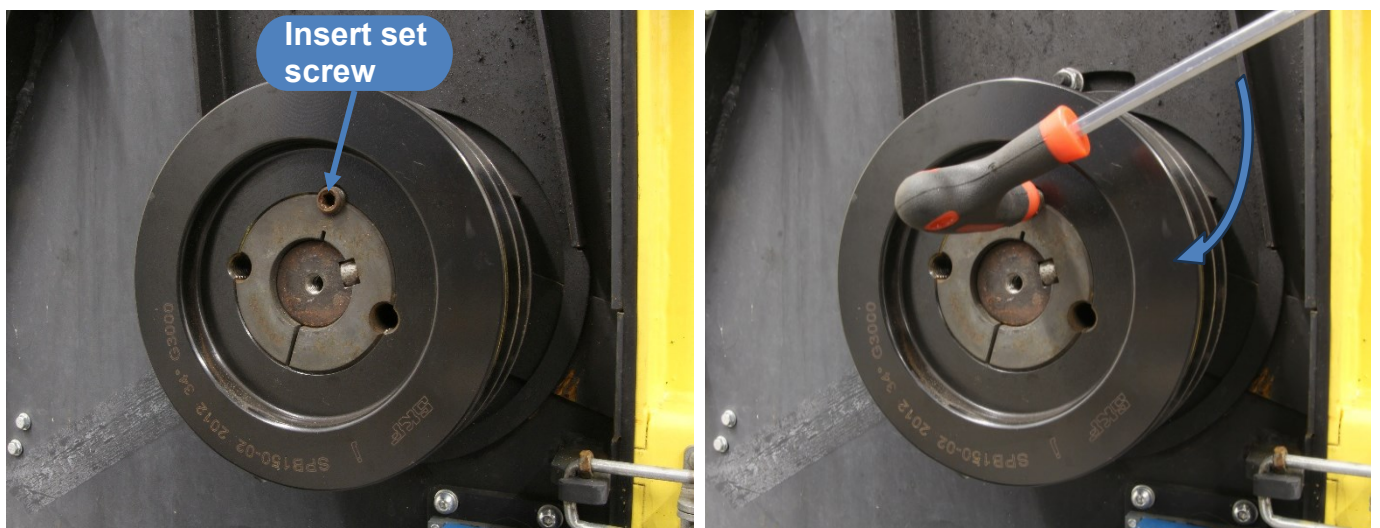
Step 7

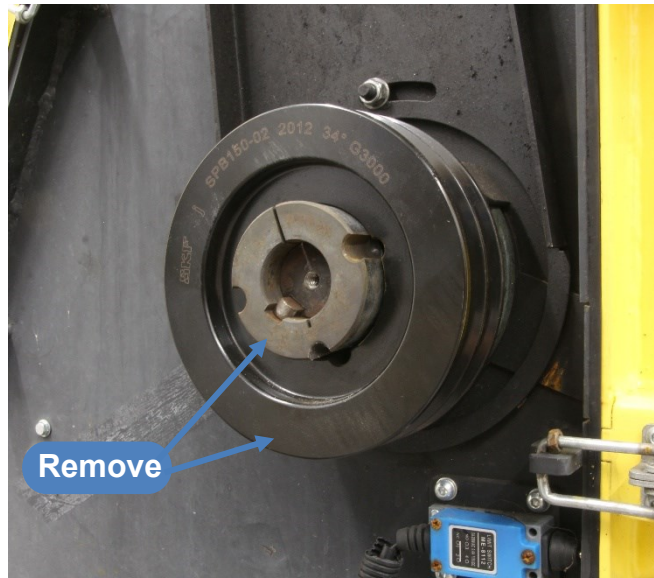
Remove the pulley bolt and set screws.



Step 8

Use a set screw to separate the pulley from the taper lock bushing. Next remove the pulley and taper lock bushing from the shaft.





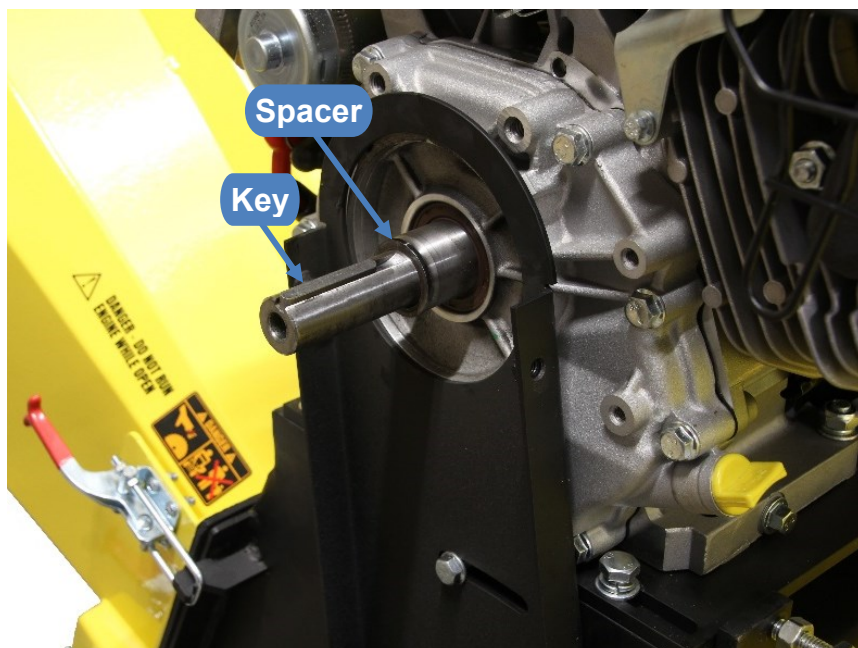
Step 9

Install new pulley with taper lock bushing. First tighten the set screws and then reinstall the pulley bolt with washer. NB! Make sure spacer bushing is reinstalled!



Step 10

Re-install the spacer and key on the engine shaft.

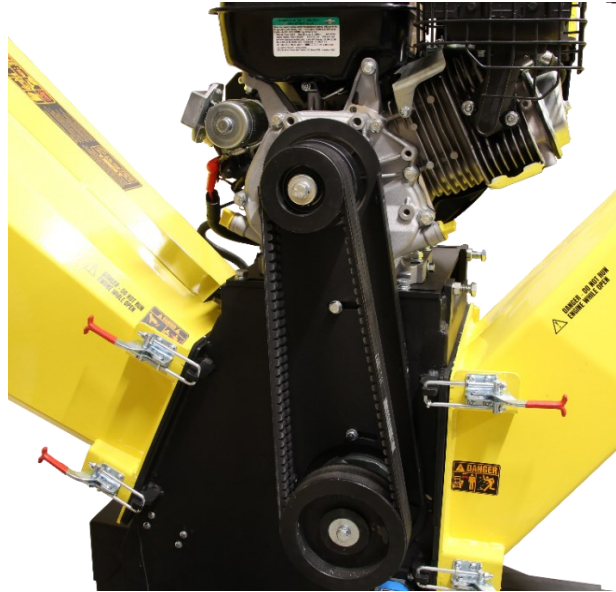


Step 11

Reinstall belts. Secure the clutch with bolt, washers and centering bush. We recommend lifting the engine mounting plate (see step 5) and push the clutch together with belts to the engine shaft. Re-install engine bolts.

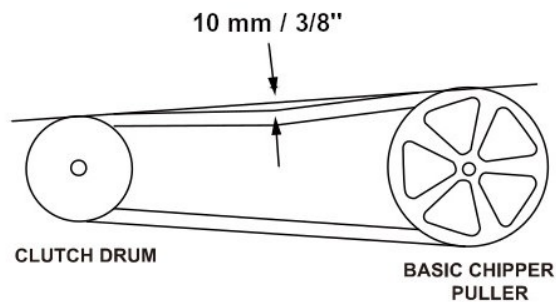
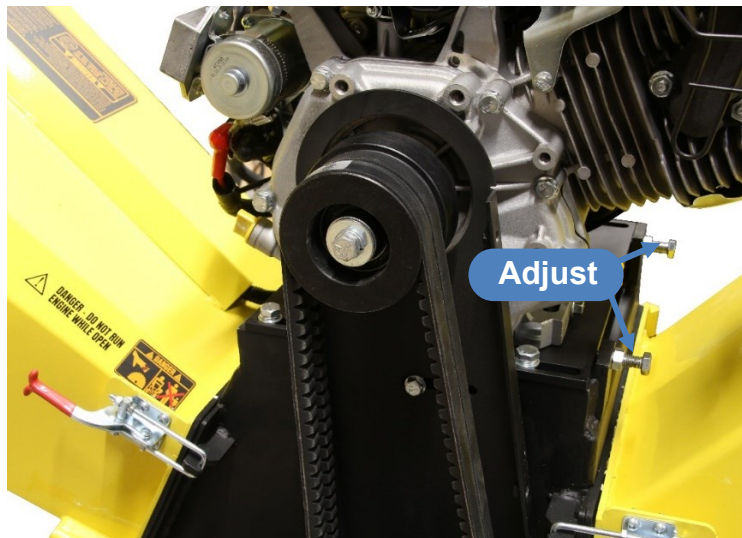
NB! We recommend doing this step with two people!

NB! Use thread lock glue on the bolt!



Step 12

Check the belt tension. Adjust the belt tensioner bolts to achieve the correct tension. The correct tension is achieved when it is possible to compress the belts by hand approximately 10 mm (3/8"). Once the correct tension is reached, secure the tensioning bolt with the nut.



Step 13

Tighten engine bolts (4 pcs.).

Step 14

Re-install belt guard.

IRON BALTIC

IRON BALTIC OÜ
Joa tee 17
Vääna 76903
Estonia / Europe

+372 6 533 711
sales@ironbaltic.com

www.ironbaltic.com
www.facebook.com/ironbaltic
www.youtube.com/user/ironbalticld

