

# IRON BALTIC

## FENDERS AND TAIL LIGHTS KIT

## WOOD CHIPPER G2

Code 76.5500

Version 05012024



**Keep this manual for future reference!**

If you need any spare parts, please send this packaging data to your local dealer or to Iron Baltic  
[sales@ironbaltic.com](mailto:sales@ironbaltic.com)

Iron Baltic Ltd | +372 653 3711 | [sales@ironbaltic.com](mailto:sales@ironbaltic.com) | [www.ironbaltic.com](http://www.ironbaltic.com)

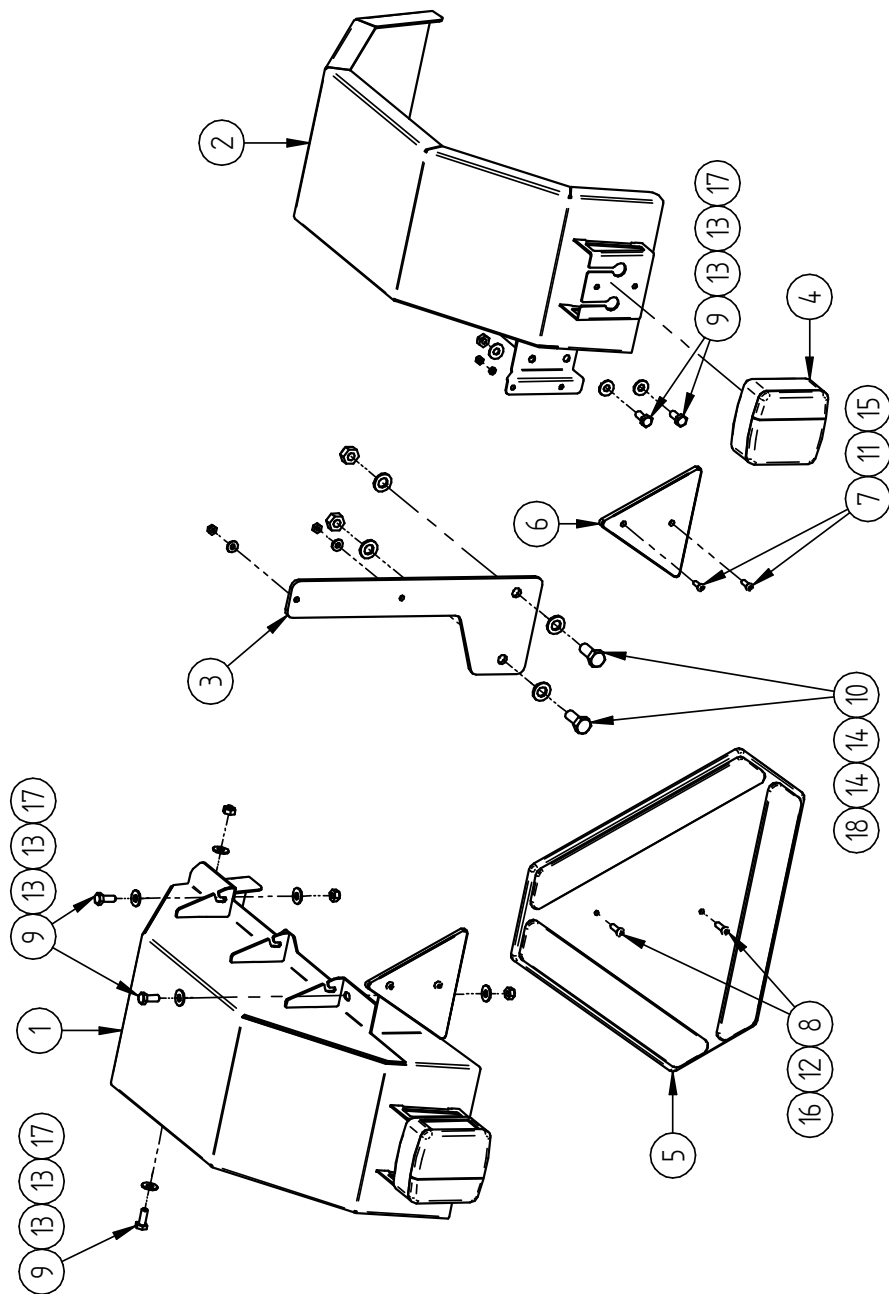
DOWNLOAD MULTILINGUAL  
USER MANUAL



[code.ironbaltic.com/u/17OEVtyu](http://code.ironbaltic.com/u/17OEVtyu)

# SPECIFICATION

Pos.	Description	Code	Amount
1	Fender left	76.5501K	1
2	Fender right	76.5502K	1
3	Bracket	76.5504	1
4	Lights set	76.5510	1
5	Reflector (slow vehicle + speed limit 25 km/h)	OT.10.05.050	1
6	Reflector (red triangle)	OT.10.05.060	2
7	Bolt M5x16 ISO7380	OT.02.03.003	4
8	Bolt M6x20 ISO7380	OT.02.03.030	2
9	Bolt M8x20 DIN933	OT.02.02.180	10
10	Bolt M12x30 DIN933	OT.02.02.390	2
11	Washer Ø5 DIN125	OT.04.01.010	4
12	Washer Ø6/15 SFS3738	OT.04.03.020	2
13	Washer Ø8/20 SFS3738	OT.04.03.030	20
14	Washer Ø12 DIN125	OT.04.01.050	4
15	Nyloc nut M5 DIN985	OT.03.02.020	4
16	Nyloc nut M6 DIN985	OT.03.02.030	2
17	Nyloc nut M8 DIN985	OT.03.02.040	10
18	Nyloc nut M12 DIN985	OT.03.02.060	2
19	Cable ties (black) 7.8x375	PM.11.00.005	5

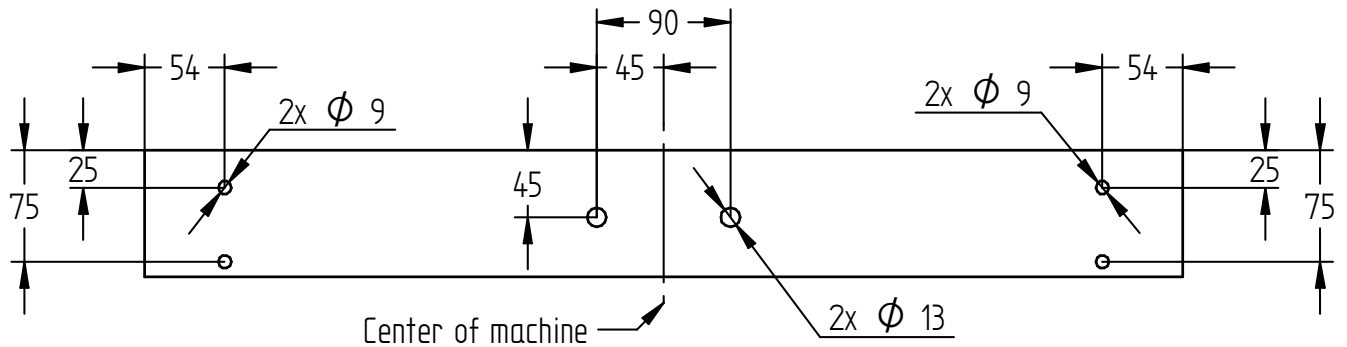


# FITTING INSTRUCTIONS

## Step 1

To install the fenders the mounting holes (if not present) must be drilled in to the wood chipper chassis as shown in figures:

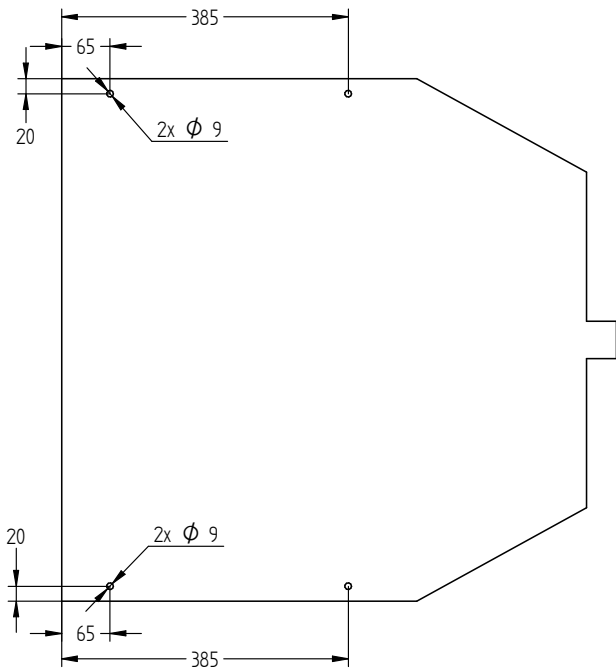
- 1) Drill  $\text{Ø}9$  mm holes (4 pcs) and  $\text{Ø}13$  mm holes (2 pcs.) in the back of the wood chipper chassis as shown in the figure (see Figure 1 and Picture 1).
- 2) Drill  $\text{Ø}9$  mm holes (4 pcs) in the upper part of the chipper chassis as shown in the figure (see Figure 2 and Picture 2).
- 3) Drill  $\text{Ø}9$  mm holes (2 pcs) in the side of the chipper chassis as shown in the figure (see Figure 3 and Picture 2).



**Figure 1: Back view of the chassis**



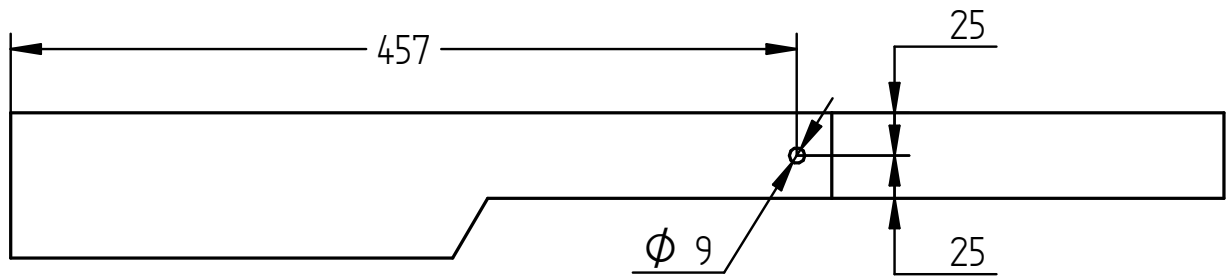
**Picture 1: Back view of the chassis**



**Figure 2: Top view of the chassis**



**Picture 2: Top view of the chassis**



**Figure 3: Side view of the chassis**



**Picture 3: Side view of the chassis**

## Step 2

Install reflector (slow vehicle) (Pos.5) to the bracket (Pos.3) and attach it to the wood chipper. Use M6x20 bolt (Pos.8), Ø6 mm washers (Pos.12) and M6 nyloc nuts (Pos.16) to fasten the reflector to the bracket. Use M12x30 bolts (Pos.10), Ø12 mm washers (Pos.14) and M12 nyloc nuts (Pos.18) to fasten the bracket to the wood chipper.



## Step 3

Install fenders (Pos.1 and Pos.2). For fastening use M8x20 bolts (Pos.9), Ø8 mm washers (Pos.13) and M8 nyloc nuts (Pos.17).



#### Step 4

Install reflectors (red triangle) (Pos.6) to the fenders. For fastening use M5x16 bolts (Pos.7), Ø5 mm washers (Pos.11) and M5 nyloc nuts (Pos.15).



#### Step 5

Install lights set (Pos.4). Watch the markings (left (L) and right (R)) on the back of the lights and install these correctly. For fastening use nuts and star washers provided with the light.



# IRON BALTIC

IRON BALTIC OÜ  
Joa tee 17  
Vääna 76903  
Estonia / Europe

+372 6 533 711  
[sales@ironbaltic.com](mailto:sales@ironbaltic.com)

[www.ironbaltic.com](http://www.ironbaltic.com)  
[www.facebook.com/ironbaltic](https://www.facebook.com/ironbaltic)  
[www.youtube.com/user/ironbalticLtd](https://www.youtube.com/user/ironbalticLtd)

