

IRON BALTIC

CLASSIC TRACK SETTER SNOW ROLLER

Code 47.5200

Version 21052025

DOWNLOAD MULTILINGUAL
USER MANUAL



code.ironbaltic.com/u/TzY7FDCM

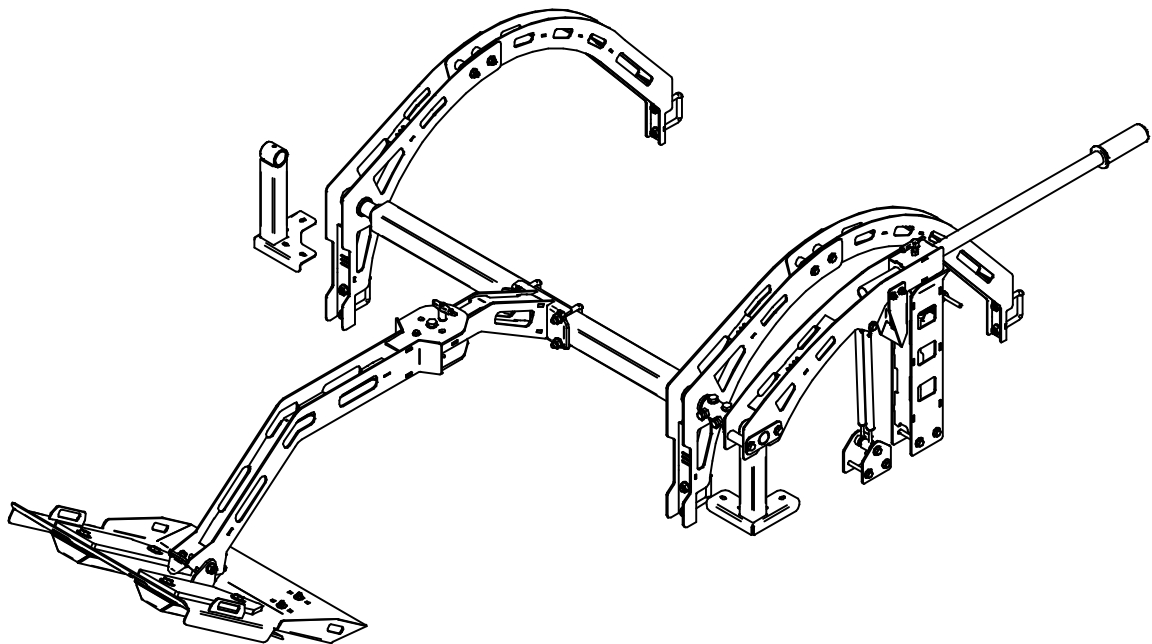
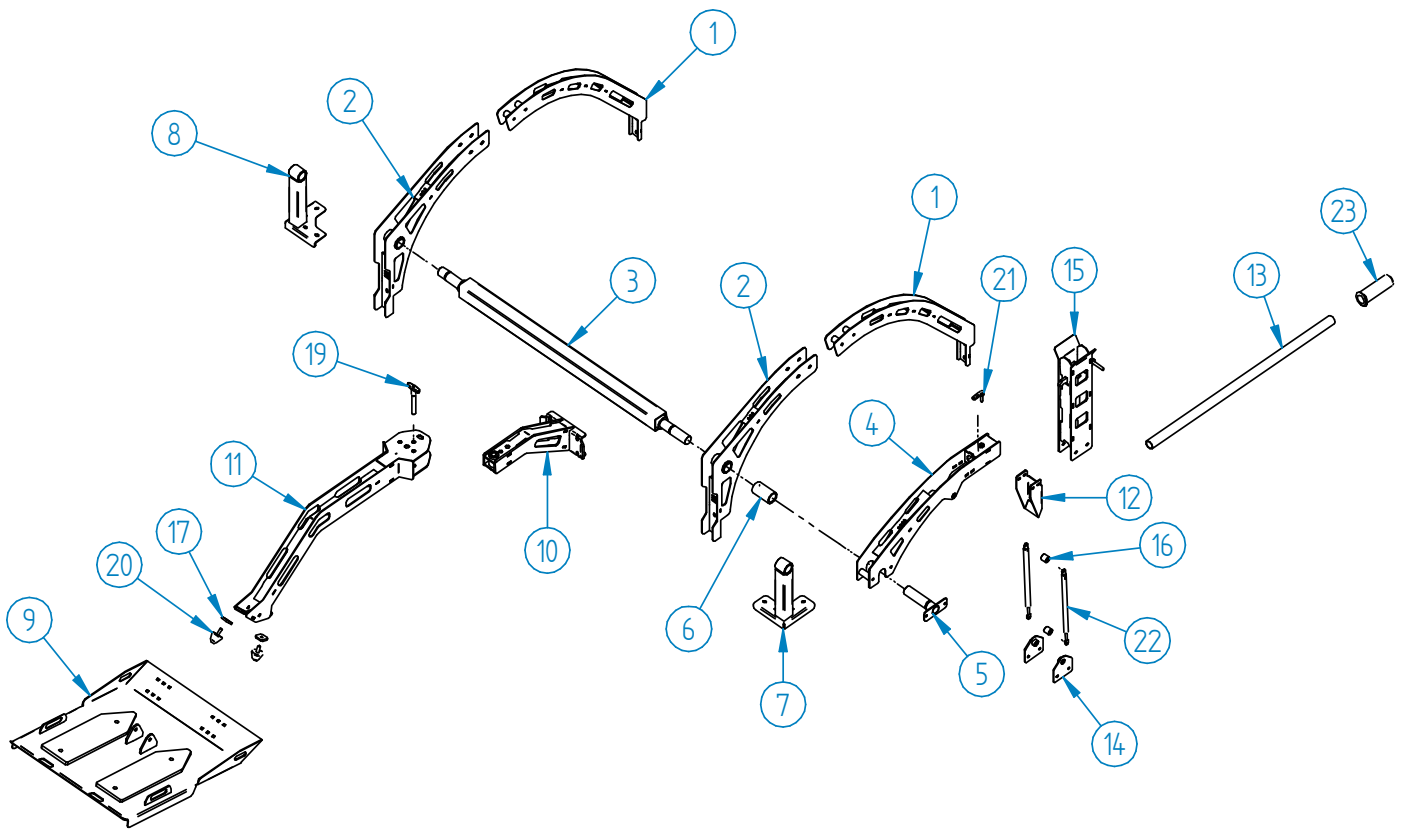


Keep this manual for future reference!

If you need any spare parts, please send this packaging data to your local dealer or to Iron Baltic
sales@ironbaltic.com

FITTING INSTRUCTIONS

Pos.	Description	Code	Amount
1	Support arch front part	47.5201K	2
2	Support arch rear part	47.5205K	2
3	Support tube	47.5210K	1
4	Lever	47.5212K	1
5	Lever shaft	47.5215K	1
6	Lever connecting pipe	47.5217	1
7	Mounting angle right	47.5220K	1
8	Mounting angle left	47.5221K	1
9	Classic track setter	47.5240K	1
10	Track setter joint first part	47.5251K	1
11	Track setter joint rear part	47.5255K	1
12	Lever locking slot	47.5125	1
13	Lever extension	47.5126	1
14	Gas spring lower mount	47.5128K	2
15	Lever lock	47.5130K	1
16	Gas spring distance bush	47.5135	2
17	Square nut	03.5204	2
18	U-bolt 50 mm	84.2010	6
19	Tap with T-handle 12x70	OT.53.00.040	1
20	Rubber shock absorber Ø40x30 M8	OT.35.03.020	2
21	Fixing handle M8x25	OT.02.06.070	1
22	Gas shock absorber 500X500N	OT.35.00.040	2
23	Handle	OT.54.01.010	1
24	Grease nipple M6	OT.17.00.005	4
25	Bolt M6x16 DIN603	OT.02.05.010	4
26	Bolt M6x16 DIN933	OT.02.02.050	1
27	Bolt M8x65 DIN933	OT.02.02.255	4
28	Bolt M8x70 DIN933	OT.02.02.260	6
29	Bolt M10x20 DIN933	OT.02.02.310	2
30	Bolt M8x75 DIN931	OT.02.01.016	2
31	Bolt M10x60 DIN931	OT.02.01.043	2
32	Bolt M10x85 DIN931	OT.02.01.049	1
33	Bolt M16x90 DIN931	OT.02.01.147	1
34	Washer Ø6/15 SFS3738	OT.04.03.020	5
35	Washer Ø8/20 SFS3738	OT.04.03.030	26
36	Washer Ø10 DIN125	OT.04.01.040	20
37	Washer Ø16 DIN125	OT.04.01.060	2
38	Nut M10 DIN934	OT.03.01.040	2
39	Nyloc nut M6 DIN985	OT.03.02.030	4
40	Nyloc nut M8 DIN985	OT.03.02.040	14
41	Nyloc nut M10 DIN985	OT.03.02.050	15
42	Nyloc nut M16 DIN985	OT.03.02.070	1

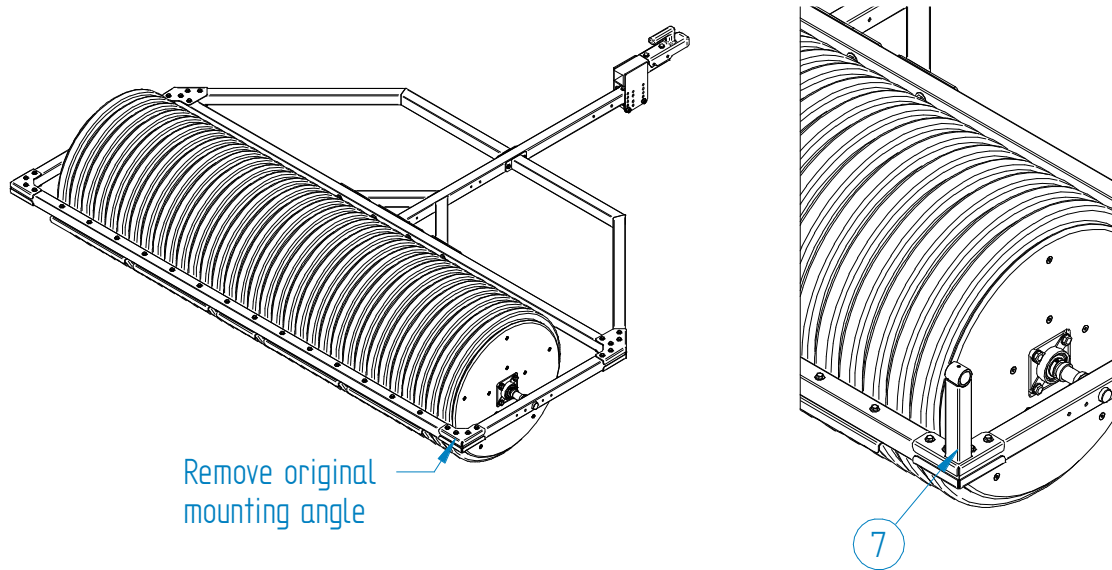


Step 1:

When installing classic track setter to the **wide snow roller (47.5000)** remove that side frame mounting bracket where you want to place it. When installing the setter to the right side, remove original frame right mounting bracket and replace it with the new right mounting bracket (Pos.7). When installing the setter to the left side, remove frame original left mounting bracket and replace it with the new left mounting bracket (Pos.8). For fastening use the original mounting hardware.

When installing classic track setter to the **narrow snow roller (47.6000)** remove that side frame mounting bracket where you want setter lever to be. If you want the lever to be on the right side, remove frame original right mounting bracket and replace it with the new right mounting bracket (Pos.7). If you want the lever to be on the left side, remove original left mounting bracket and replace it with the new left mounting bracket (Pos.8). For fastening use the original mounting hardware.

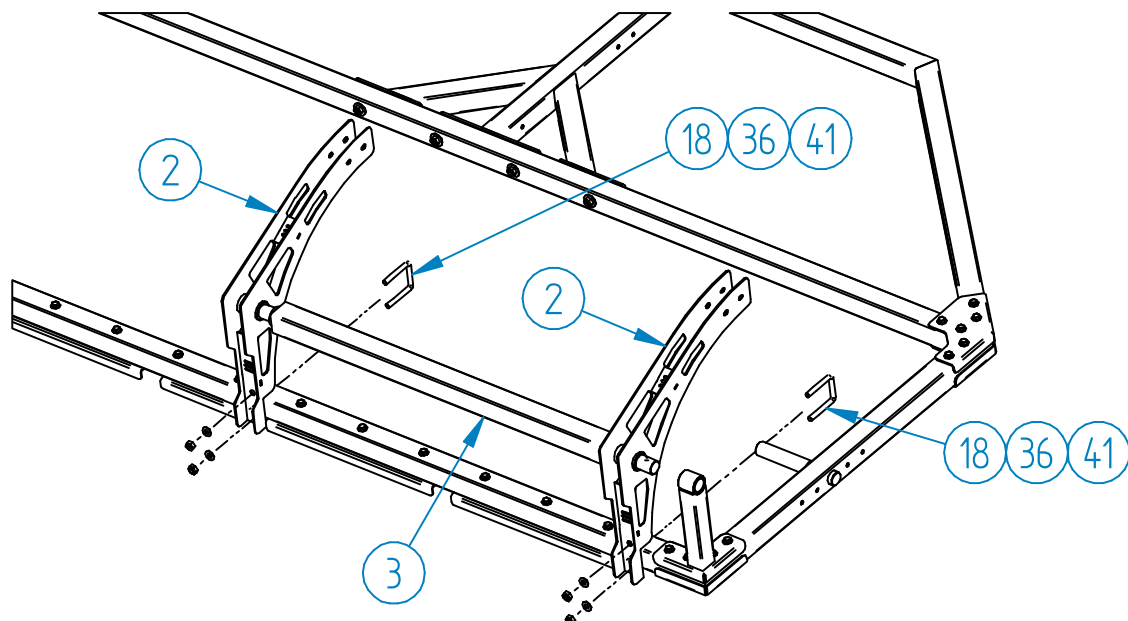
In this manual the track setter will be installed on the right side!



** Some details have been removed from the figure for better visibility*

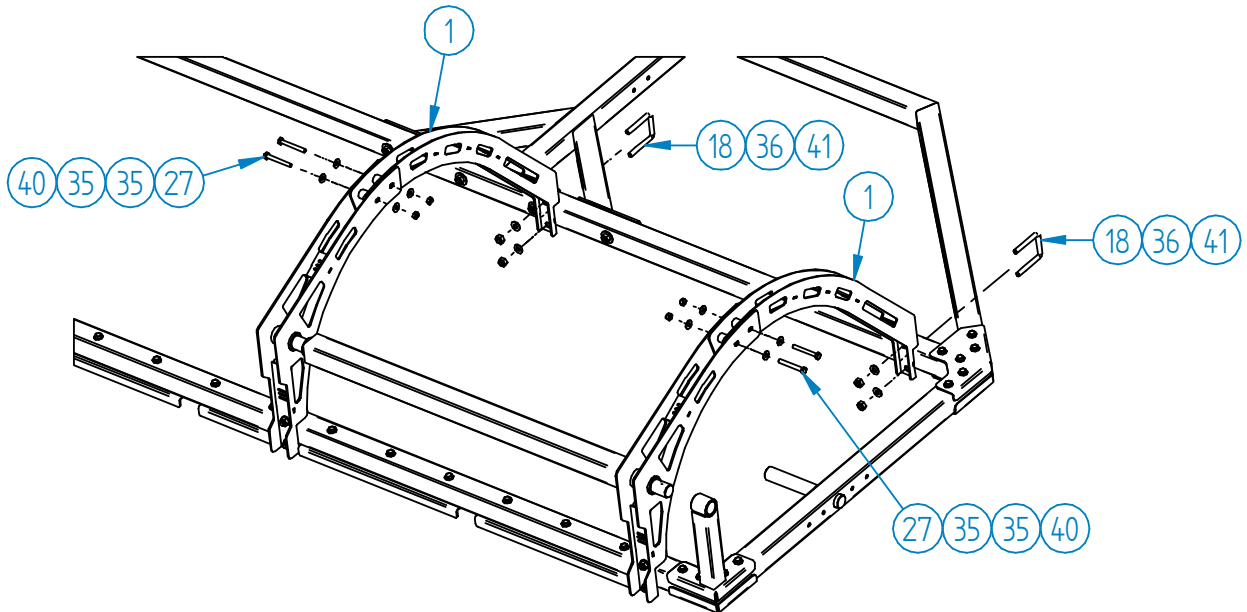
Step 2:

Install the support arch rear part (Pos.2) together with the support tube (Pos.3). For fastening use 50mm U-bolts (Pos.18), Ø10 mm washers (Pos.36) and M10 nyloc nuts (Pos.41). NB! The U-bolt is installed between the snow roller rear frame tube and the rubber deflector of the finisher. NB! Do not tighten bolts/nuts!



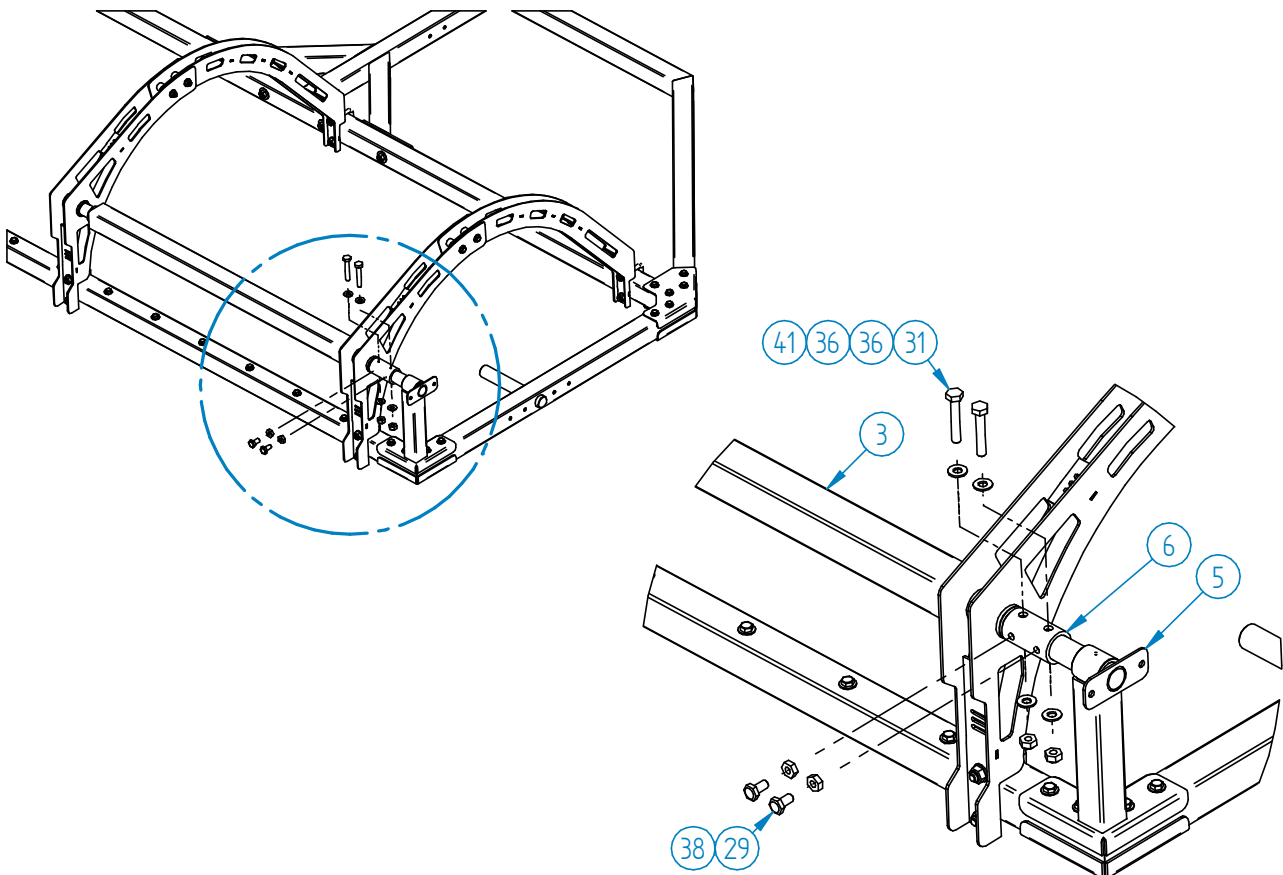
** Some details have been removed from the figure for better visibility*

Step 3: Install the support arch front parts (Pos.1) and connect them to the rear parts. Use 50mm U-bolts (Pos.18), Ø10mm washers (Pos.36) and M10 nyloc nuts (Pos.41) to attach to the frame, and use M8x65 bolts (Pos.27), Ø8mm washers (Pos.35) and M8 nyloc nuts (Pos.40). NB! Do not tighten the bolts/nuts!



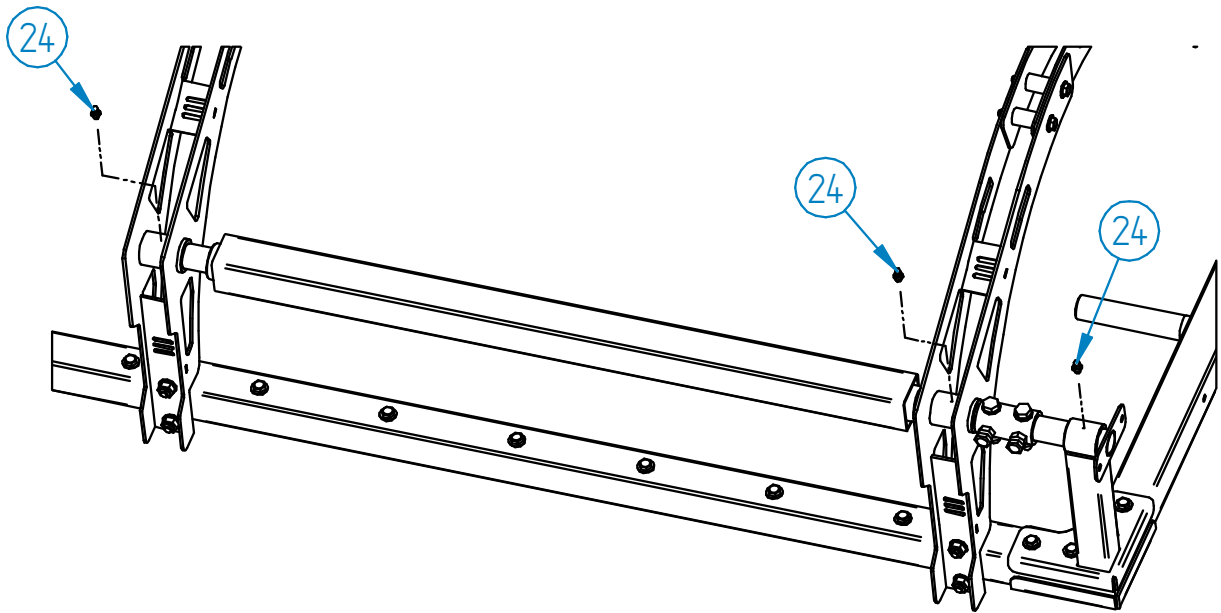
** Some details have been removed from the figure for better visibility*

Step 4: Install the lever shaft (Pos.5) and connecting pipe (Pos.6) to the support pipe (Pos.3). For fastening, use M10x60 bolts (Pos.31), Ø10 mm washers (Pos.36) and M10 nyloc nuts (Pos.41). Tighten the position of the connecting pipe with M10x20 bolts (Pos.29) and fix the bolts with M10 nuts (Pos.38).



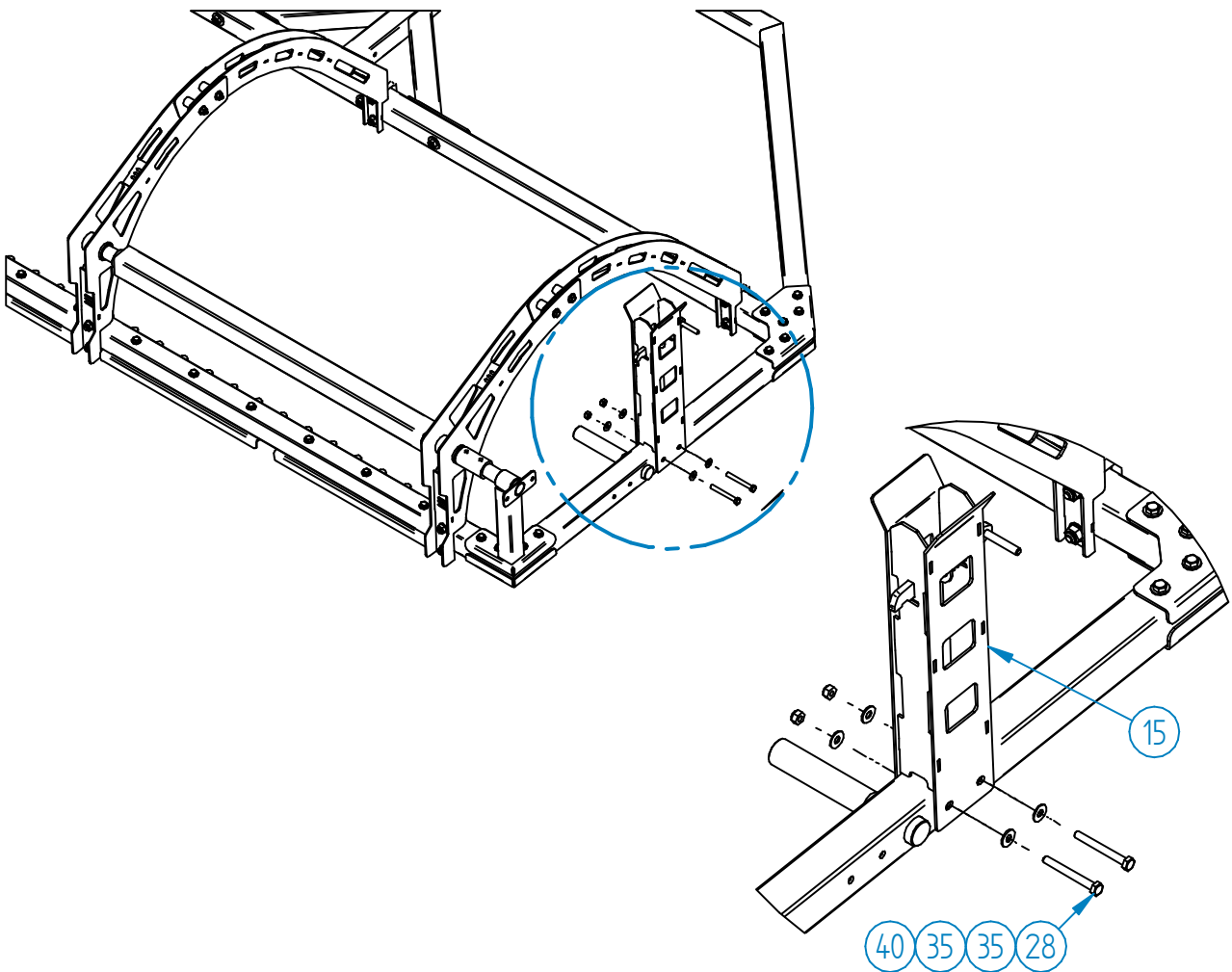
** Some details have been removed from the figure for better visibility*

Step 5: Install grease nipples (Pos.24) and add grease through them.



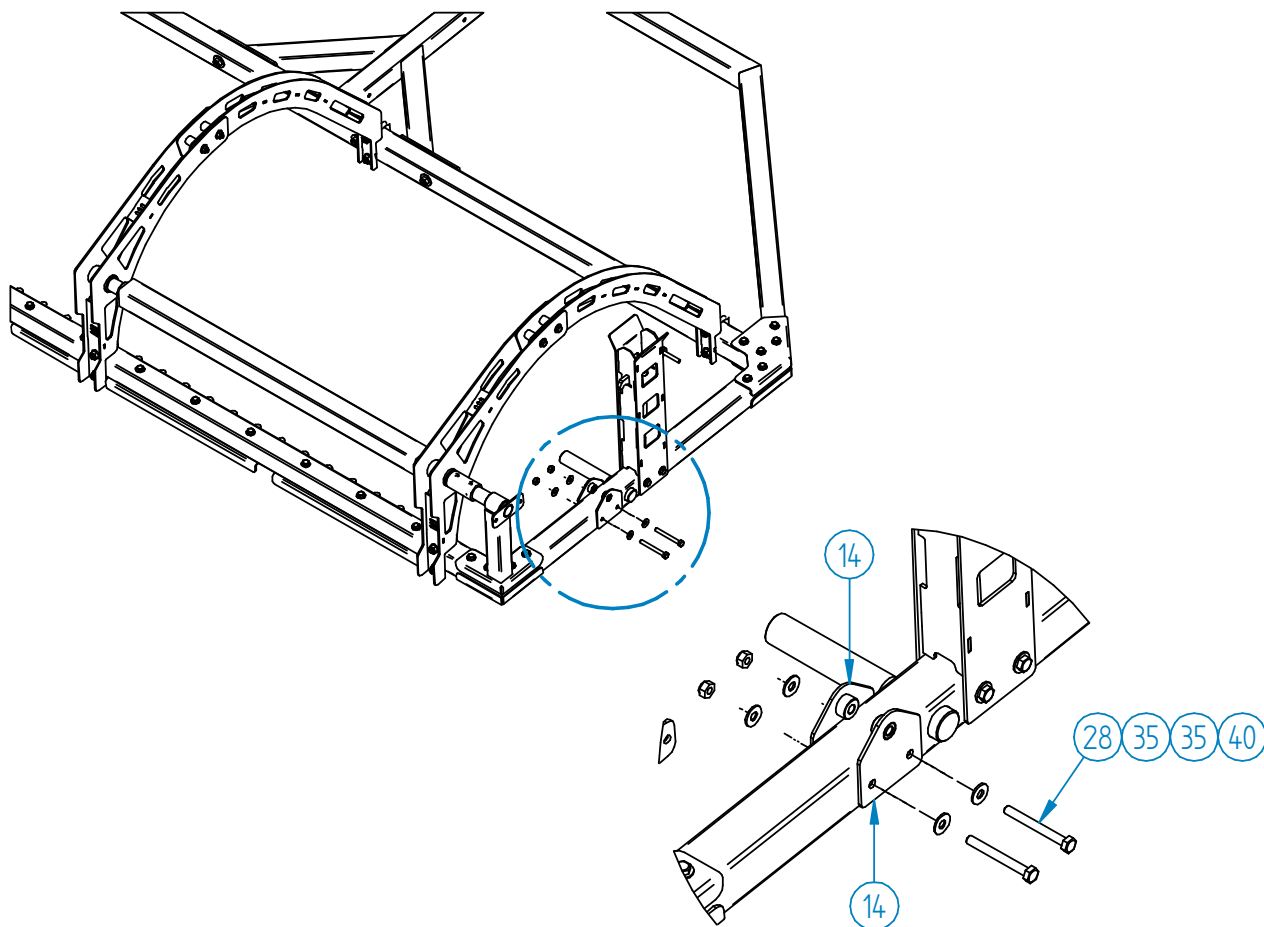
** Some details have been removed from the figure for better visibility*

Step 6: Install the lever lock (Pos.15). For fastening, use M8x70 bolts (Pos.28), Ø8 mm washers (Pos.35) and M8 nyloc nuts (Pos.40).



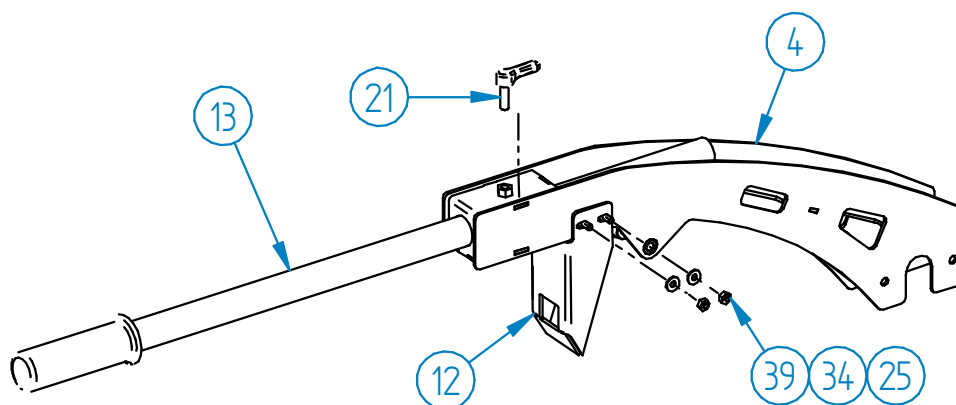
** Some details have been removed from the figure for better visibility*

Step 7: Install the gas spring lower mounts (Pos.14). For fastening, use M8x70 bolts (Pos.28), Ø8 mm washers (Pos.35) and M8 nyloc nuts (Pos.40).



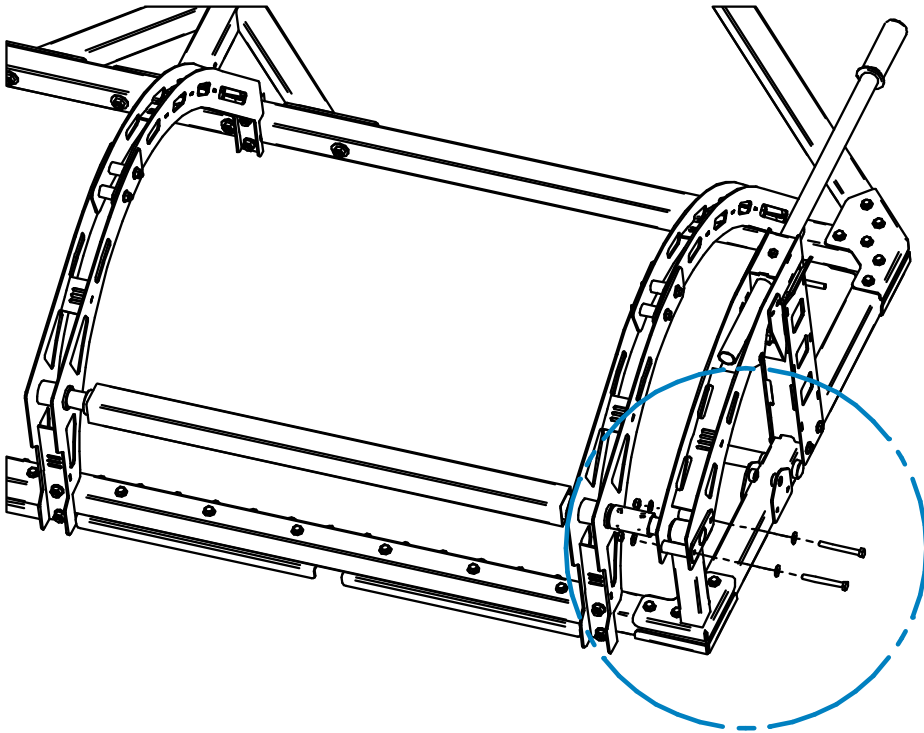
** Some details have been removed from the figure for better visibility*

Step 8: Install the lever locking slot (Pos.12) and the lever extension (Pos.13) to the lever (Pos.4). Use M6x16 (Pos.25), Ø6 mm washers (Pos.34) and M6 nyloc nuts (Pos.39) to fasten the locking slot. Fix the lever extension with the fixing handle (Pos.21).



Step 9:

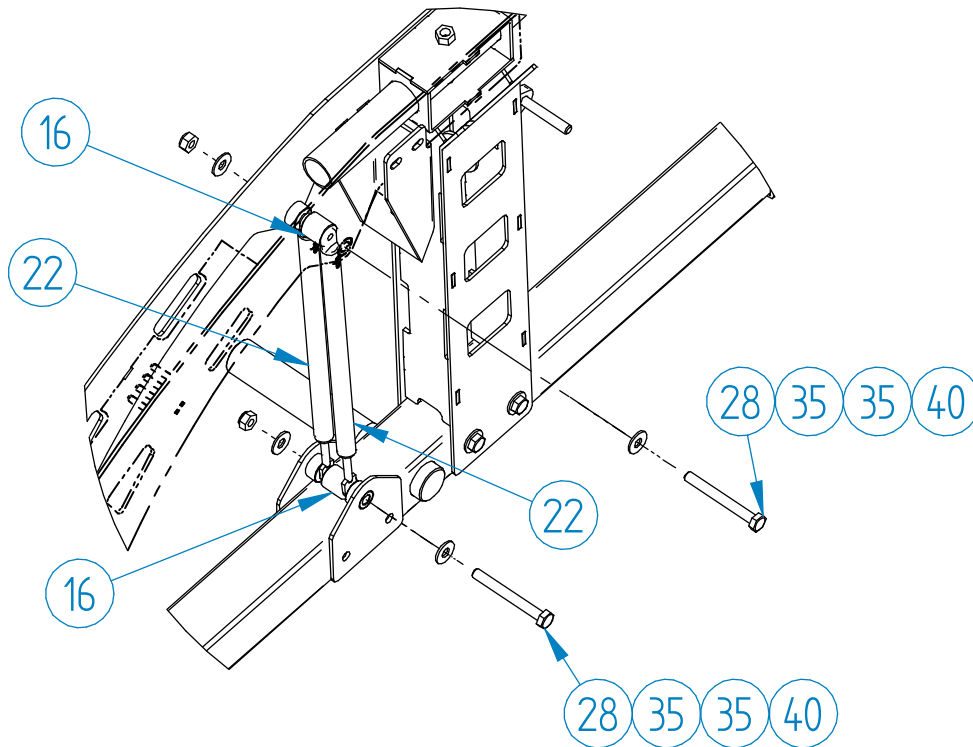
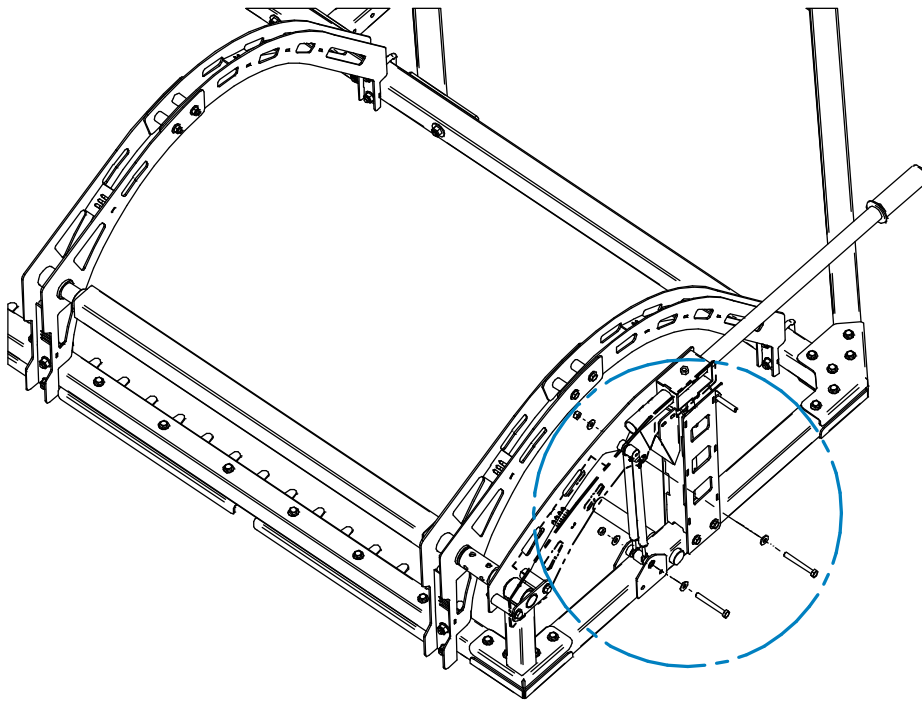
Install the assembled lever onto the lever shaft. For fastening, use M8x75 bolts (Pos.30), Ø8 mm washers (Pos.35) and M8 nyloc nuts (Pos.40). NB! Also tighten all the bolts/nuts described in step 2 and step 3!



40 35 35 30

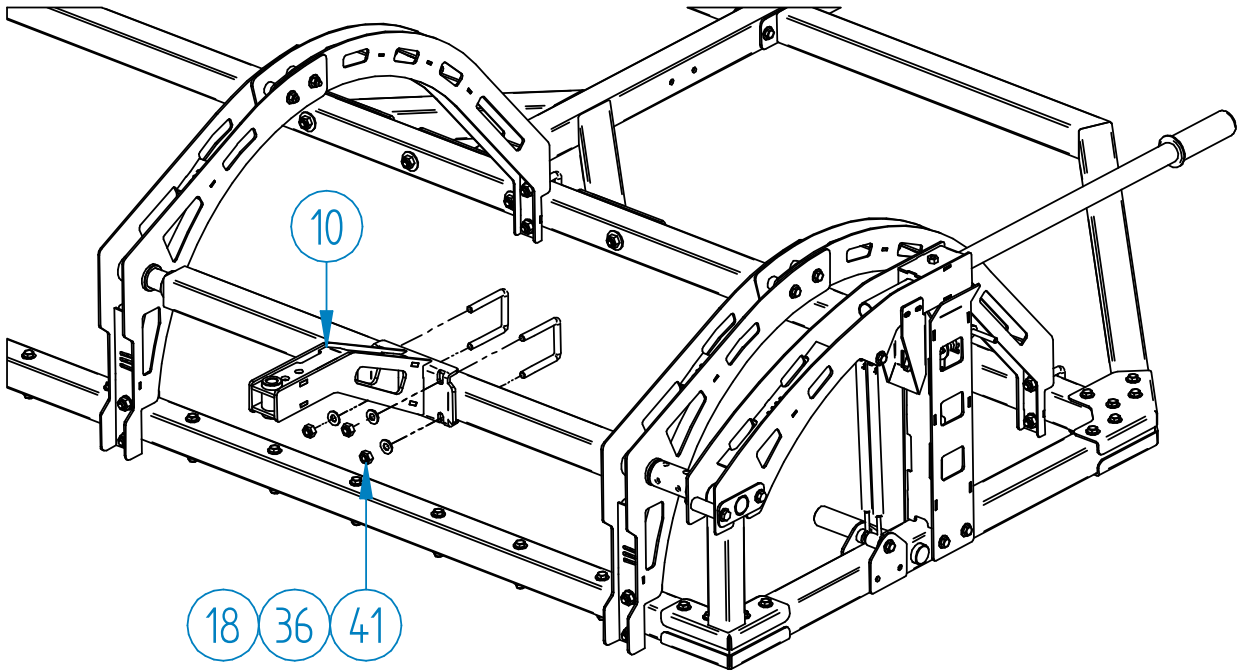
** Some details have been removed from the figure for better visibility*

Step 10: Install gas springs (Pos.22). For fastening, use M8x70 bolts (Pos.28), Ø8 mm washers (Pos.35) and M8 nyloc nuts (Pos.40). Place a bush (Pos.16) between the shock absorbers as a distance.



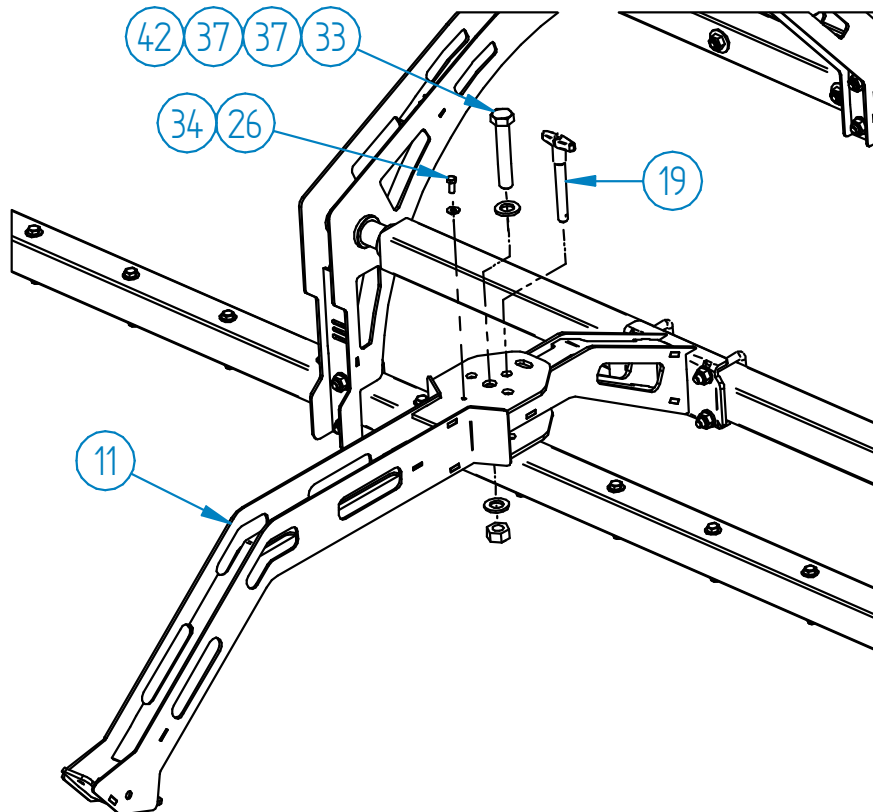
** Some details have been removed from the figure for better visibility*

Step 11: Install the first part of the track setter joint (Pos.10). For fastening, use U-bolts (Pos.18), Ø8 mm washers (Pos.36) and M8 nyloc nuts (Pos.41).



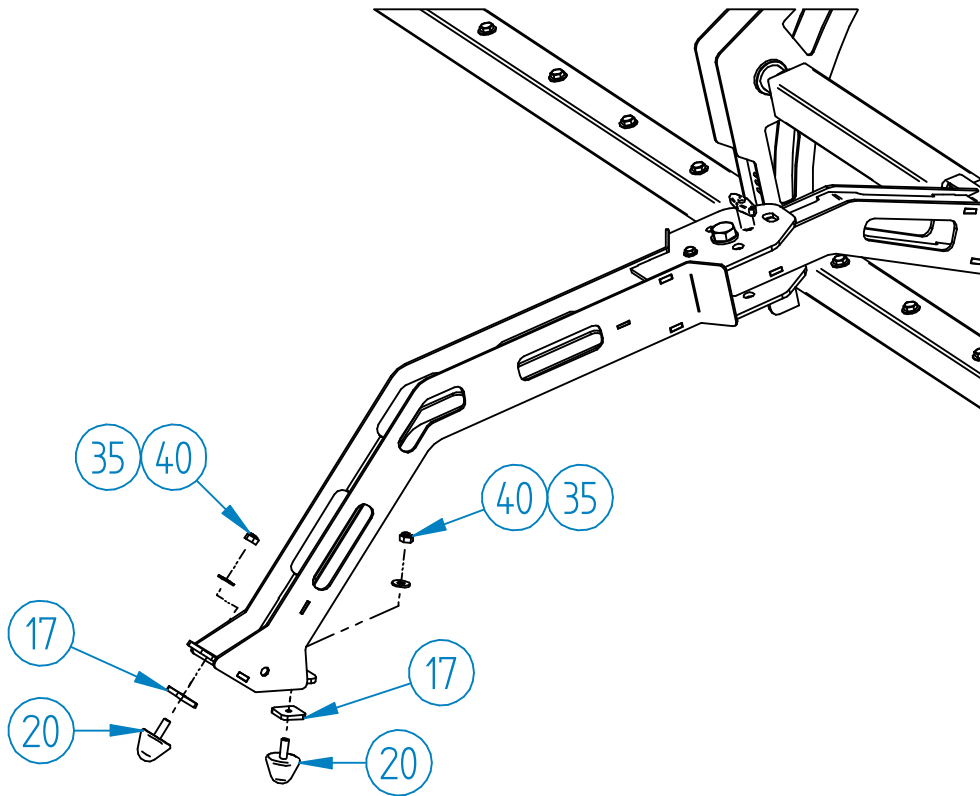
** Some details have been removed from the figure for better visibility*

Step 12: Install the second part of the joint (Pos.11) and pin (Pos.19). Use M10x85 (Pos.33), Ø10 mm washers (Pos.37) and M10 nyloc nuts (Pos.42) to fasten the joint. Use M6x16 bolt (Pos.26) and Ø6 mm washer (Pos.34) to fasten the pin cable.

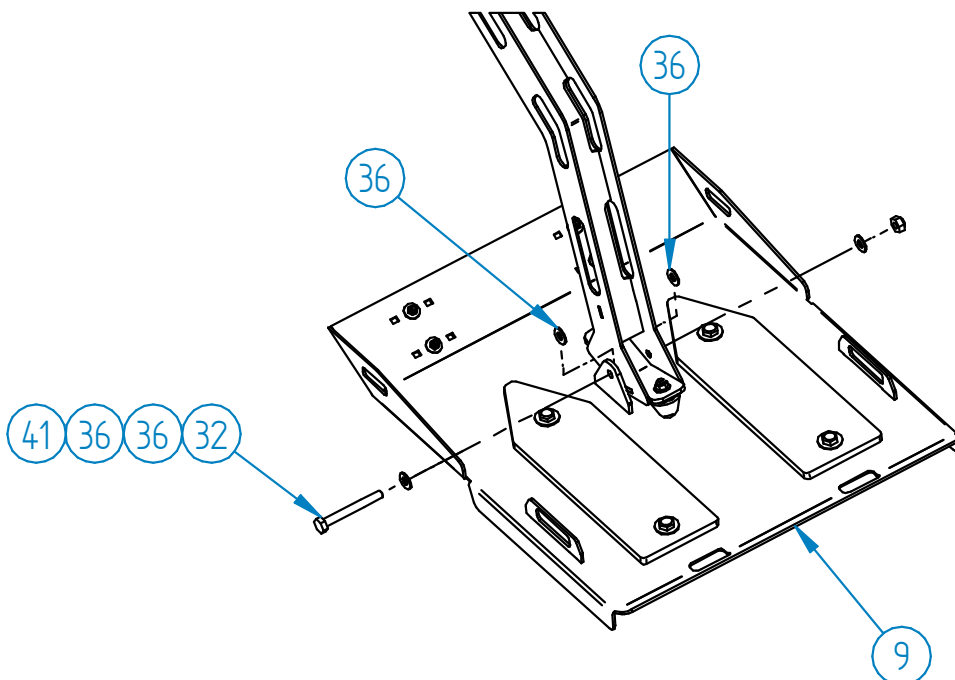


** Some details have been removed from the figure for better visibility*

Step 13: Install the rubber shock absorbers (Pos.20). For fastening use M8 nyloc nuts (Pos.40) and Ø8 mm washer (Pos.35). Install square nuts (Pos.17) between the shock absorber and the joint according to the working conditions. For the first test, one square nut should be installed under both shock absorbers, but with higher minus degrees and frozen snow, the front part of the classic track cutter may need more pressure, so both square nuts should be installed under the first rubber shock absorber. In plus degrees and softer snow, the pressure on the front of the classic track cutter should be reduced, so the square nuts should be removed or installed under the rear shock.

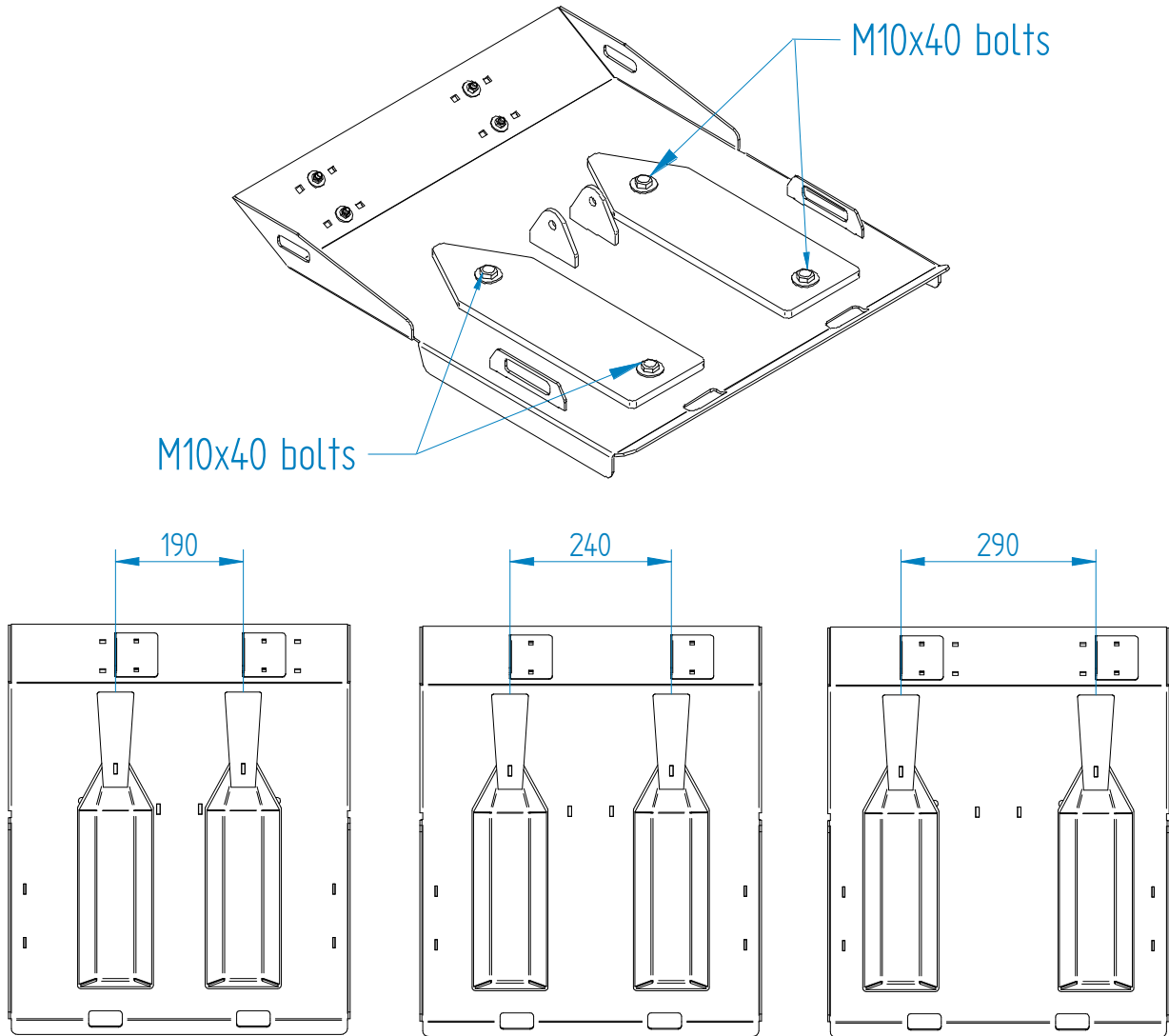


Step 14: Install the classic track setter (Pos.9). For fastening use 10x85 bolts (Pos.32), Ø10 mm washers (Pos.36) and M10 nyloc nut (Pos.41), be aware to install Ø10 mm washers (Pos.36) on both sides between the classic track setter and the track setter joint.



- Step 15:** The width and depth of the classic track can be adjusted. The width can be adjusted between three positions:
- a. 190 mm (used, for example, on paths for children)
 - b. 240 mm (most standard and most used)
 - c. 290 mm (used, for example, when going down a hill)

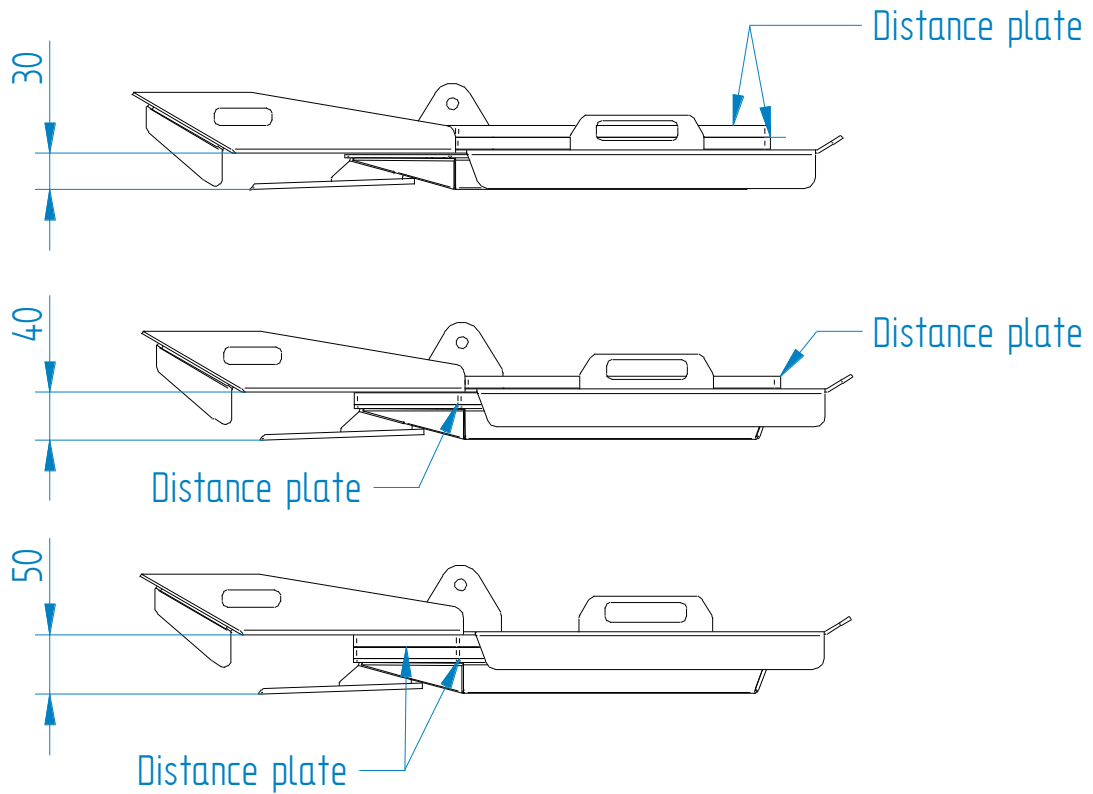
To adjust, remove the M10x40 bolts and select the appropriate position.



The depth can be adjusted between three positions:

- a. 30 mm
- b. 40 mm
- c. 50 mm

To adjust, remove the M10x40 bolts and add the appropriate number of distance plates under the track cutter. Place the plates that are not in use on top of the cutter.



IRON BALTIC

IRON BALTIC OÜ
Joa tee 17
Vääna 76903
Estonia / Europe

+372 6 533 711
sales@ironbaltic.com

www.ironbaltic.com
www.facebook.com/ironbaltic
www.youtube.com/user/ironbalticLtd

