

IRON BALTIC

REAR WINCH MOUNT

ACCESS

AX 600 / 700 / 800

Code 05.9400

Version 26112023



DOWNLOAD MULTILINGUAL
USER MANUAL



code.ironbaltic.com/u/69qIP2zC

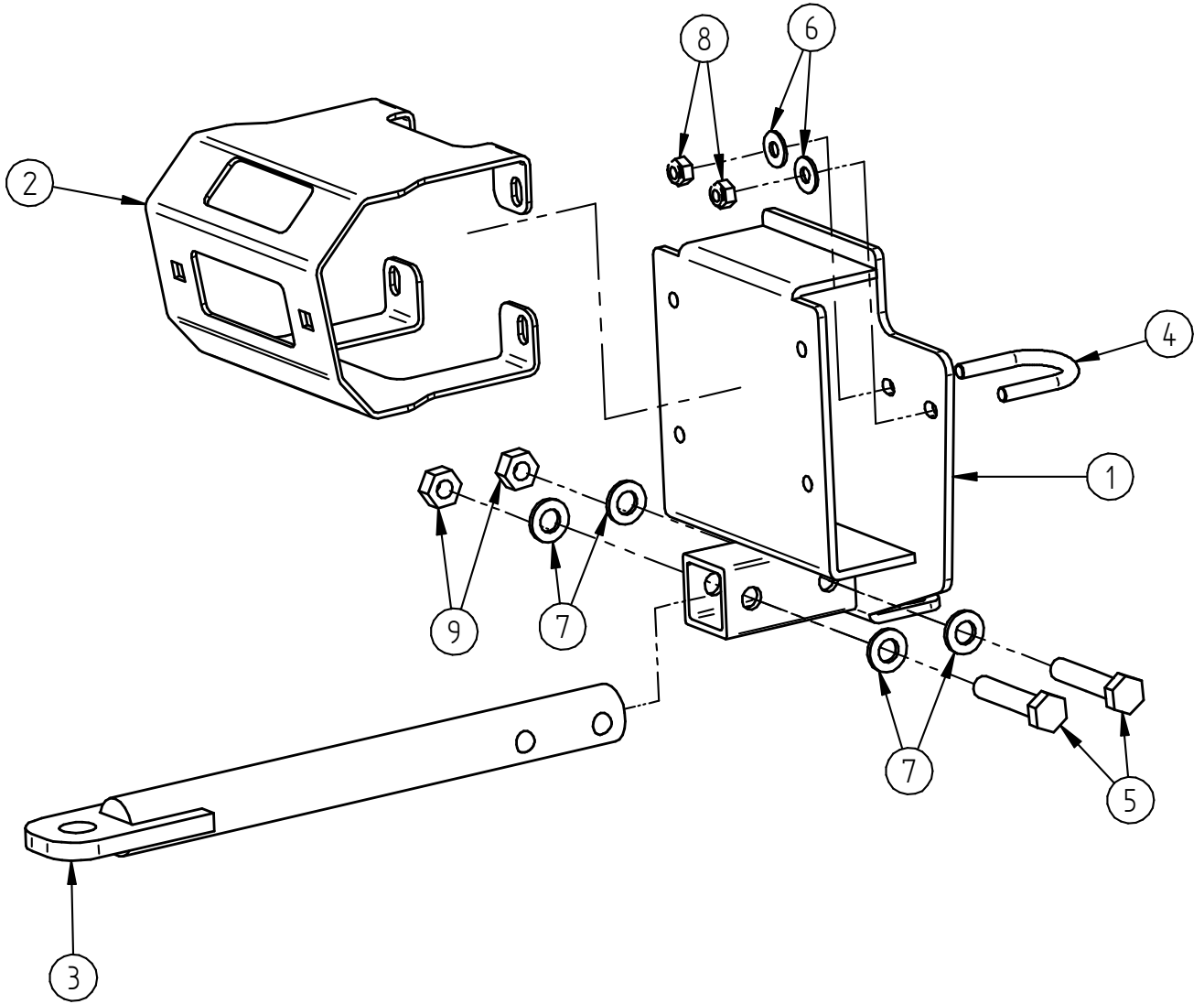
Keep this manual for future reference!

If you need any spare parts, please send this packaging data to your local dealer or to Iron Baltic
sales@ironbaltic.com

Iron Baltic Ltd | +372 653 3711 | sales@ironbaltic.com | www.ironbaltic.com

SPECIFICATION

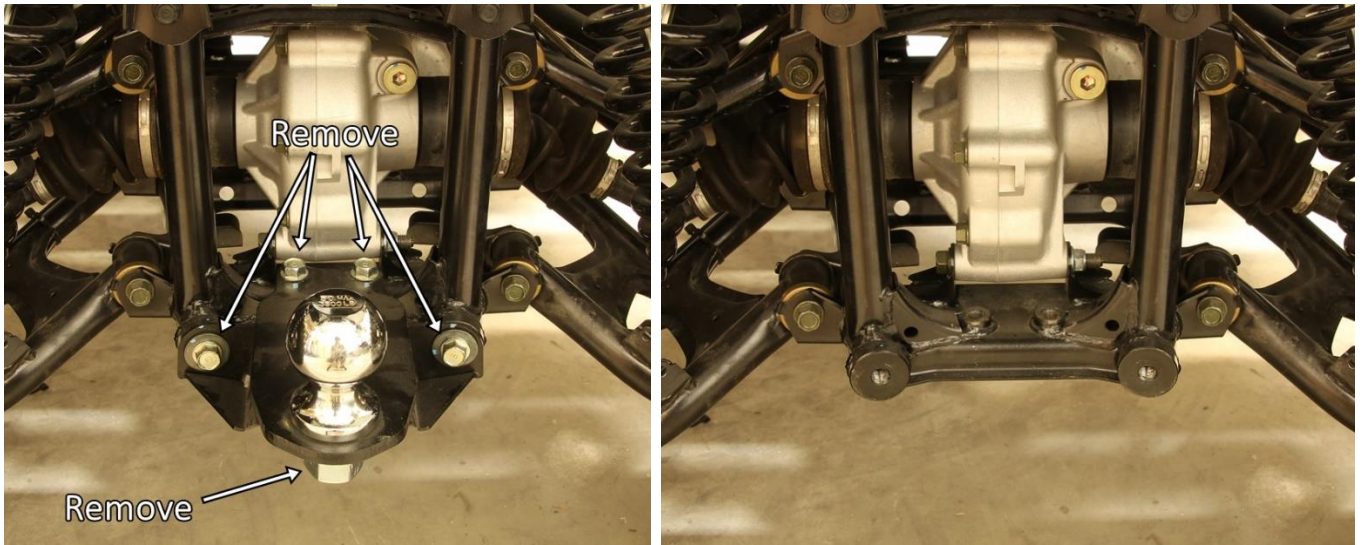
Pos.	Description	Code	Amount
1	Winch adapter	05.9401K	1
2	Fairlead holder	05.1202	1
3	Hitchball holder	15.500K	1
4	U-Bolt M8x32	OT.05.01.020	2
5	Bolt M12x60 DIN931	OT.02.01.090	2
6	Washer Ø8/20 SFS3738	OT.04.03.030	4
7	Washer Ø12 DIN125	OT.04.01.050	4
8	Nyloc nut M8 DIN985	OT.03.02.040	4
9	Nyloc nut M12 DIN985	OT.03.02.060	2



FITTING INSTRUCTIONS

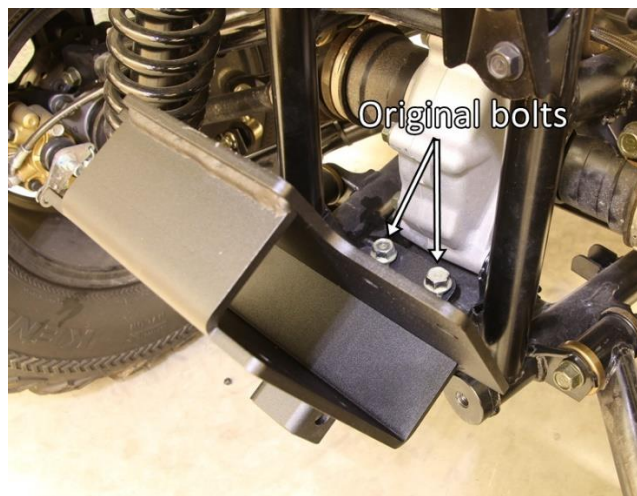
Step 1

Remove original hitch ball adapter from ATV and the hitch ball from the adapter.



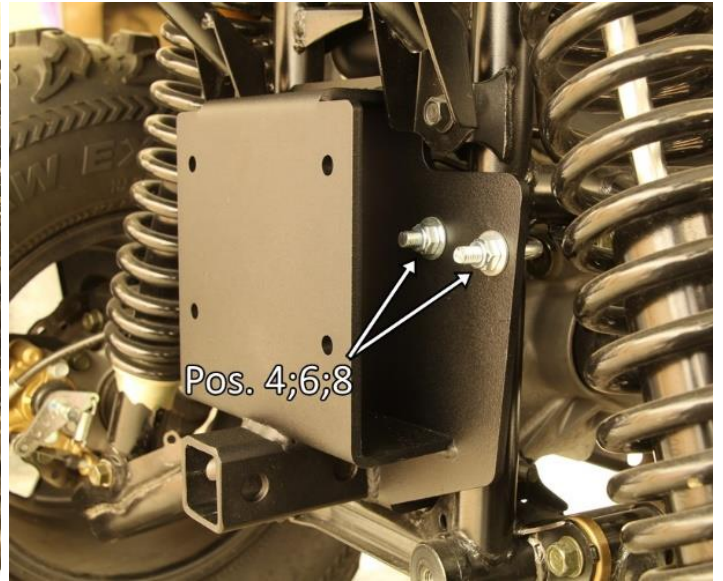
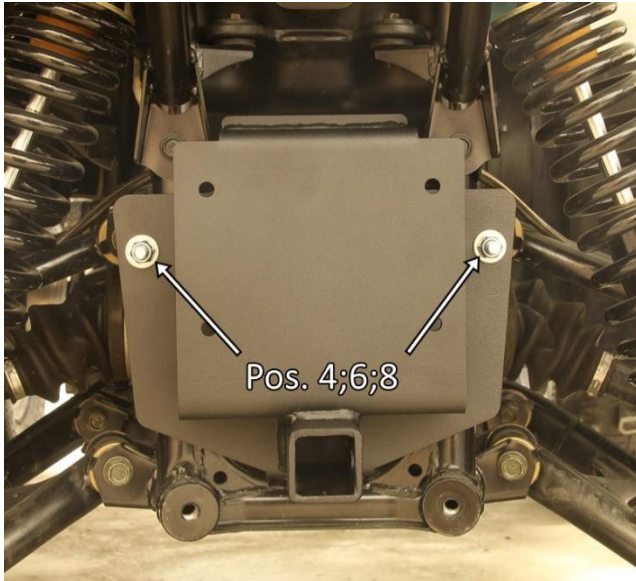
Step 2

Install the winch adapter lower bolts. Use original hitch ball adapter bolts. Use a 14mm socket wrench and extension to tighten the bolts.



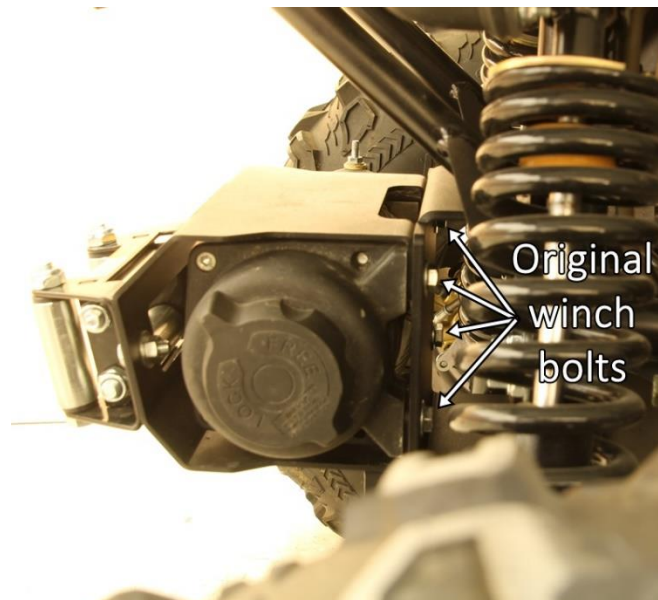
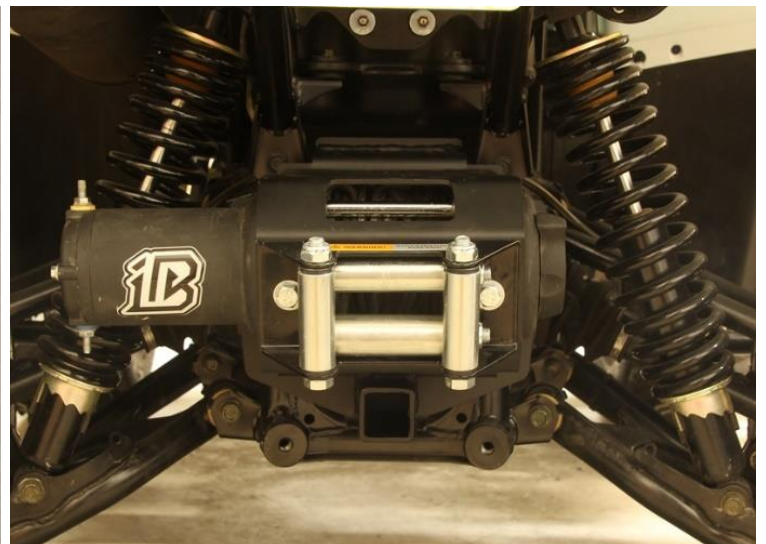
Step 3

Install U-bolts.



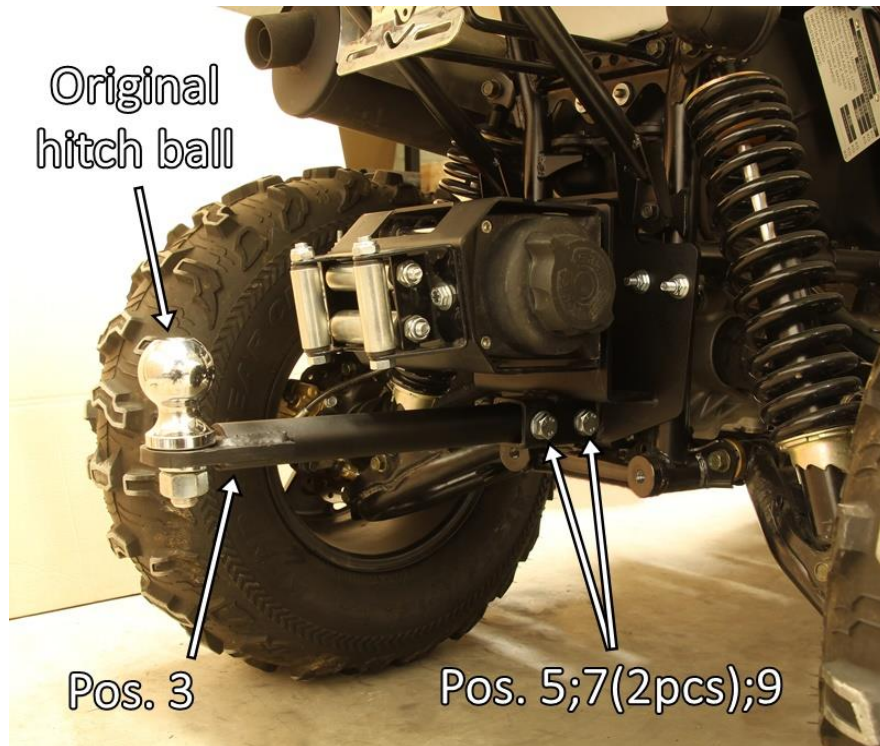
Step 4

Install fairlead to fairlead holder 05.1202 and then install fairlead holder with winch to adapter 05.9401K. Use bolts supplied with winch.



Step 5

Install hitchball holder 15.500K. Attach original hitch ball to the holder.



IRON BALTIC

IRON BALTIC OÜ
Joa tee 17
Vääna 76903
Estonia / Europe

+372 6 533 711
sales@ironbaltic.com

www.ironbaltic.com
www.facebook.com/ironbaltic
www.youtube.com/user/ironbalticLtd

