

IRON BALTIC

FRONT MOUNT ADAPTER

STELS

Guepard 850

Kood 03.11900

Version 12112023



DOWNLOAD MULTILINGUAL
USER MANUAL



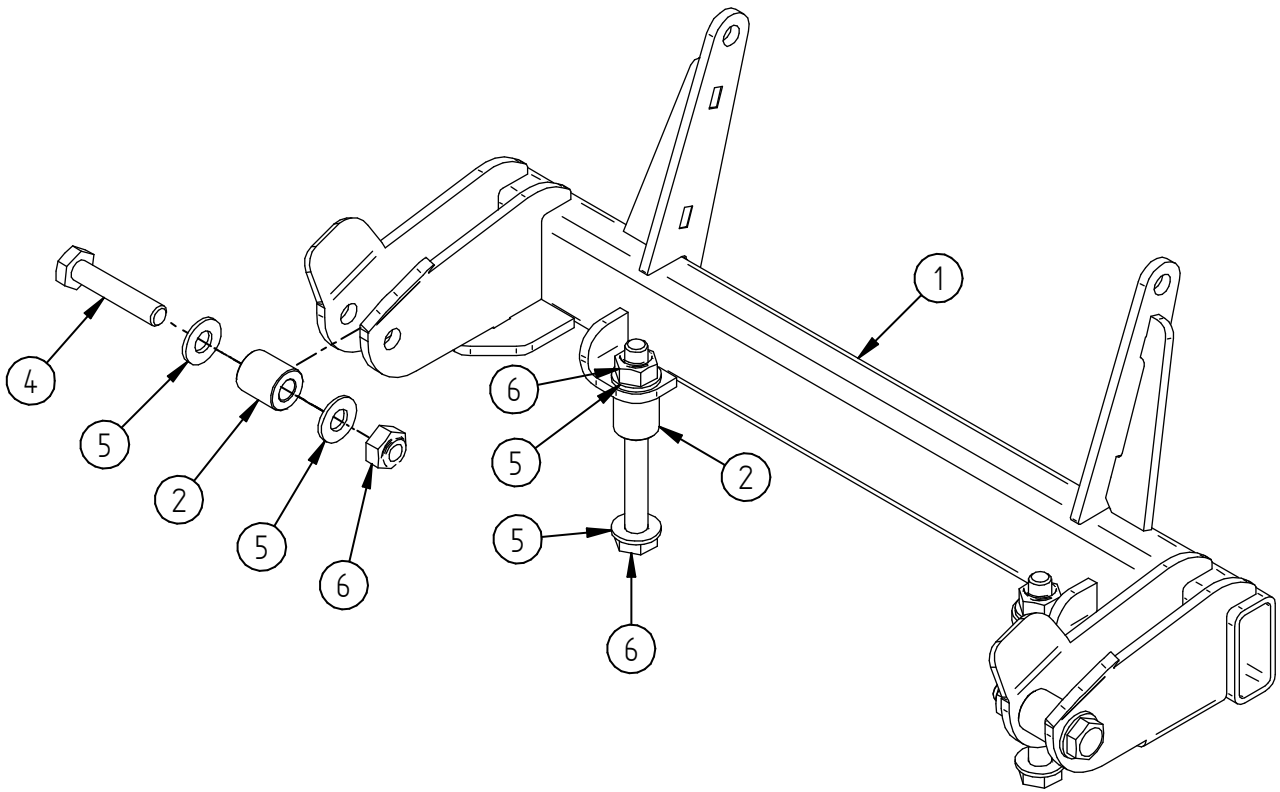
code.ironbaltic.com/u/p6oDUwNW

Keep this manual for future reference!

If you need any spare parts, please send this packaging data to your local dealer or to Iron Baltic
sales@ironbaltic.com

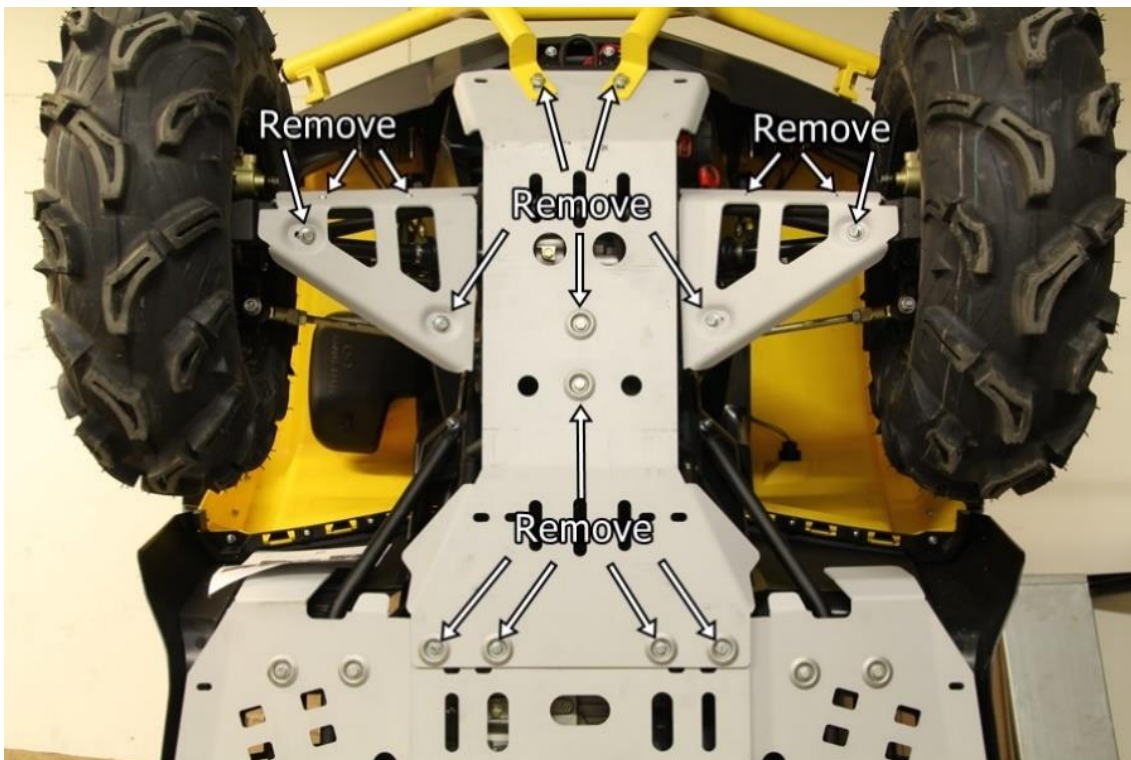
SPECIFICATION

Pos.	Description	Code	Amount
1	Plow adapter	03.11901K	1
2	Bush	03.5906	4
3	Bolt M10x100 DIN931 10.9 ZN	OT.02.01.053	2
4	Bolt M10x50 DIN933	OT.02.02.340	2
5	Washer M10 DIN125	OT.04.01.040	8
6	Nyloc nut M10 DIN985	OT.03.02.050	4

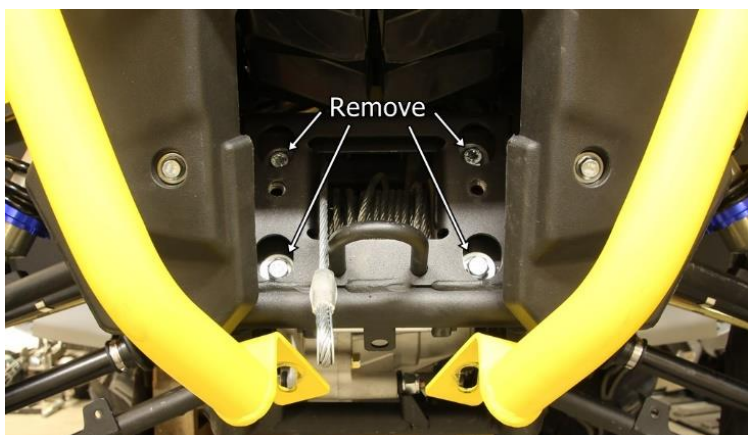
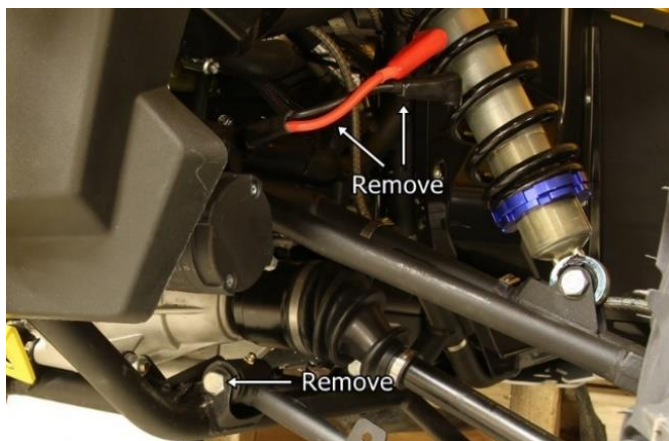
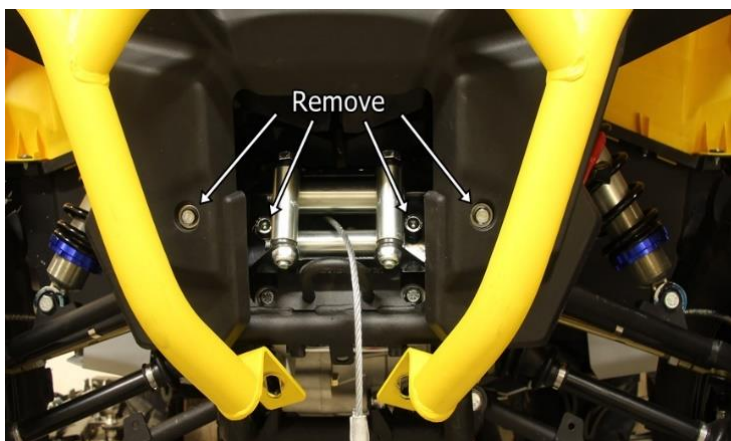


FITTING INSTRUCTION

Step 1 Remove skid plate and control arm protector bolts, nuts and clamps.

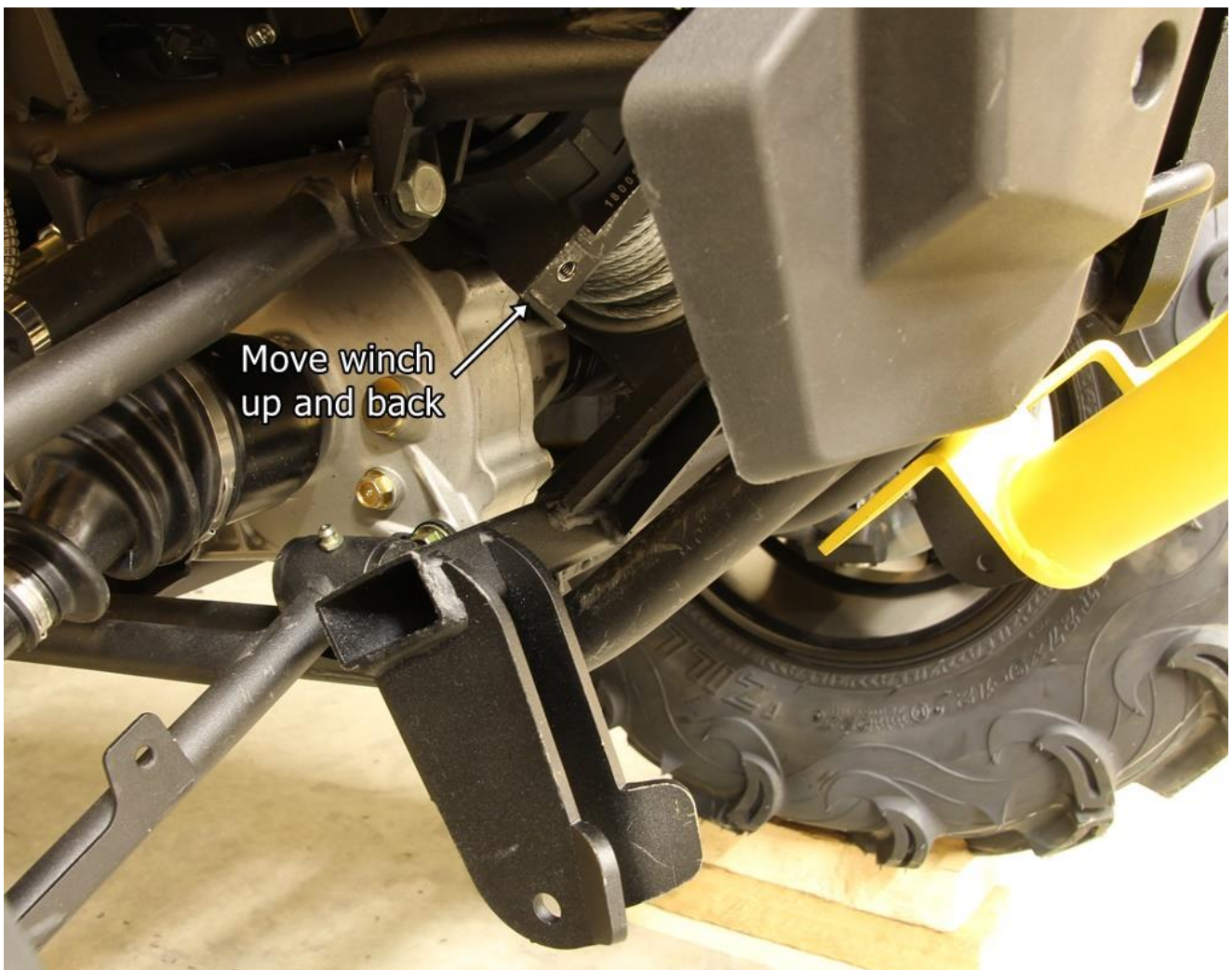


Step 2 Remove winch fairlead and plastic cover bolts, lower control arm front bolts (both sides) and winch wires, winch bolts and two frame tube bolts (one each side).



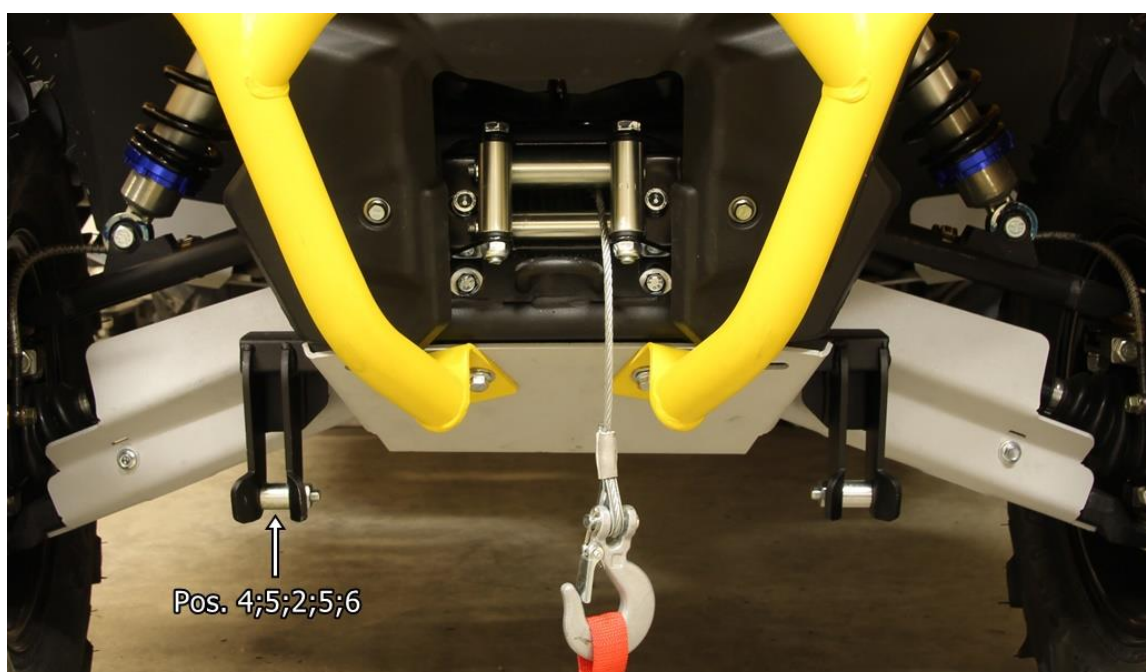
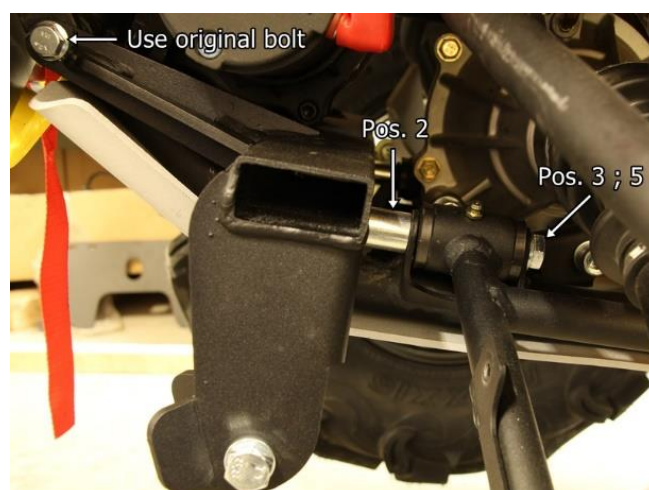
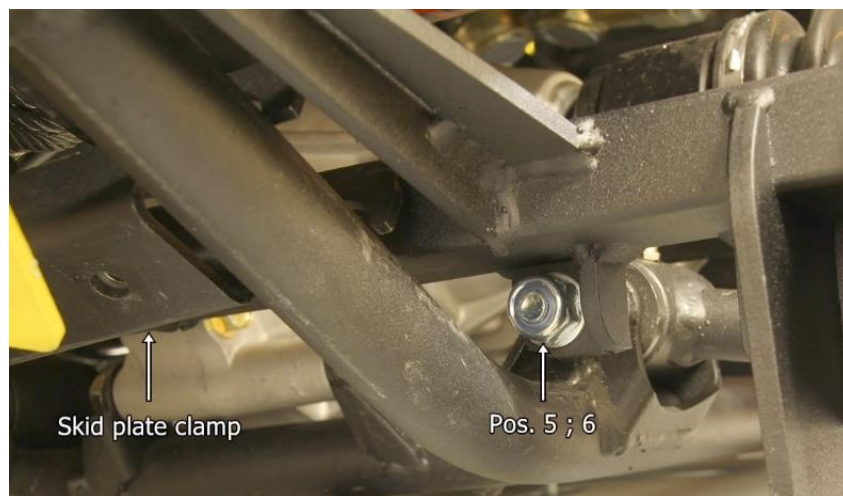
Step 3

Place the winch to one side and move the right part of the plow adapter over the left side frame tube. Next place the winch up and backwards and move the adapter over the right side frame tubes.



Step 4

Before installing the plow adapter, position the original front skid plate clamp to its place and attach the winch. Install plow adapter with M10x100 bolts (Pos. 3), distance bushes (Pos. 2), M10 washers (Pos. 5) and M10 nuts (Pos. 6). Install M10x100 bolts from rear towards front. Use original bolts for front mounting point. Next install bushes to adapter (Pos. 2;4;5;6). Last step is to reinstall skid plate, control arm protectors, winch fairlead and wires.



IRON BALTIC

IRON BALTIC OÜ
Joa tee 17
Vääna 76903
Estonia / Europe

+372 6 533 711
sales@ironbaltic.com

www.ironbaltic.com
www.facebook.com/ironbaltic
www.youtube.com/user/ironbalticLtd

