

IRON BALTIC

FRONT MOUNT ADAPTER

ACCESS

AX 600 / 700 / 800

Code 03.10900

Version 11112023



Keep this manual for future reference!

If you need any spare parts, please send this packaging data to your local dealer or to Iron Baltic sales@ironbaltic.com

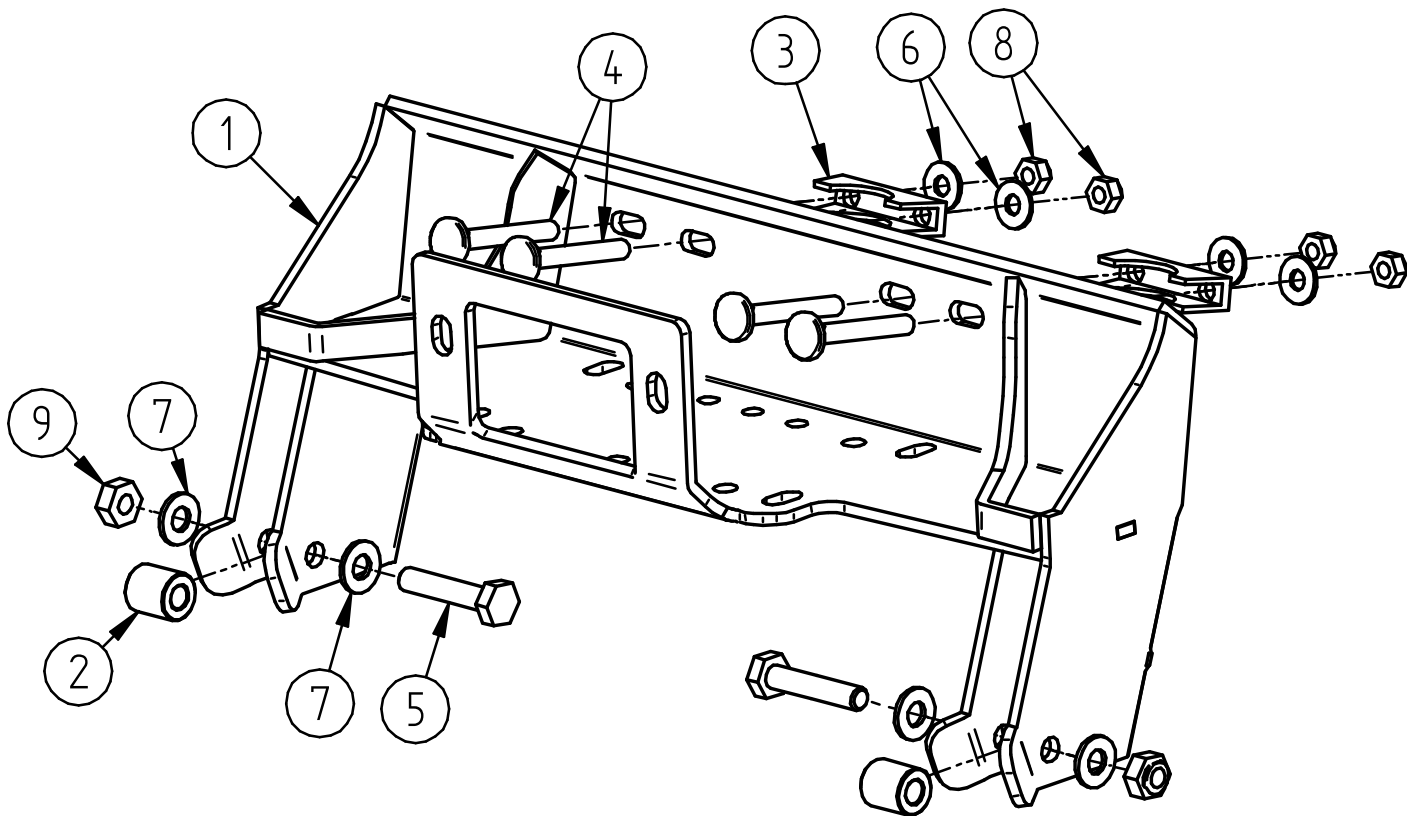
DOWNLOAD MULTILINGUAL
USER MANUAL



code.ironbaltic.com/u/6zax8wpD

SPECIFICATION

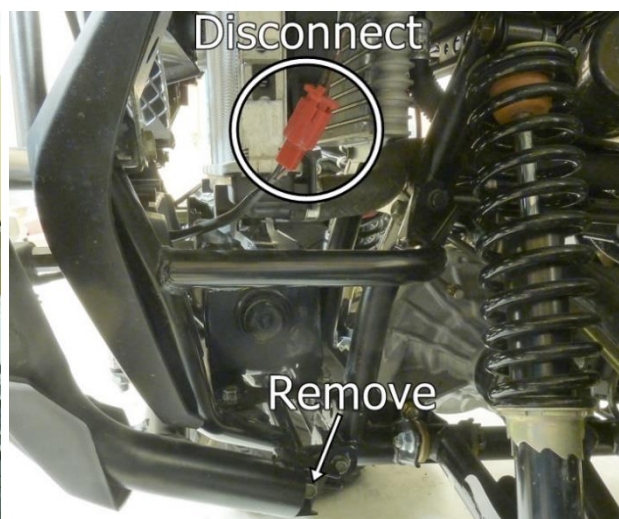
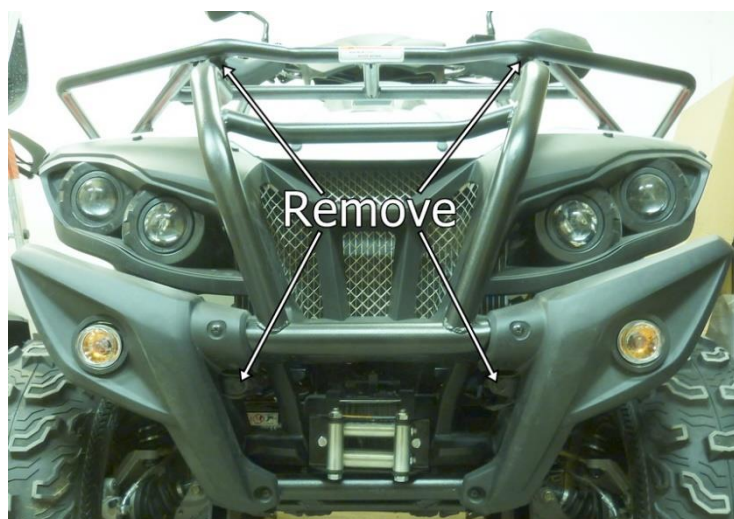
Pos.	Description	Code	Amount
1	Adapter	03.10901K	1
2	Bush	03.5906	2
3	Pipe clamp bracket 32mm	OT.05.04.020	2
4	Carriage bolt M8x60 DIN603	OT.02.05.080	4
5	Bolt M10x50 DIN931	OT.02.01.042	2
6	Washer ø8/20 SFS3738	OT.04.03.030	4
7	Washer M10 DIN125	OT.04.01.040	4
8	Nyloc nut M8 DIN985	OT.03.02.040	4
9	Nyloc nut M10 DIN985	OT.03.02.050	2



FITTING INSTRUCTIONS

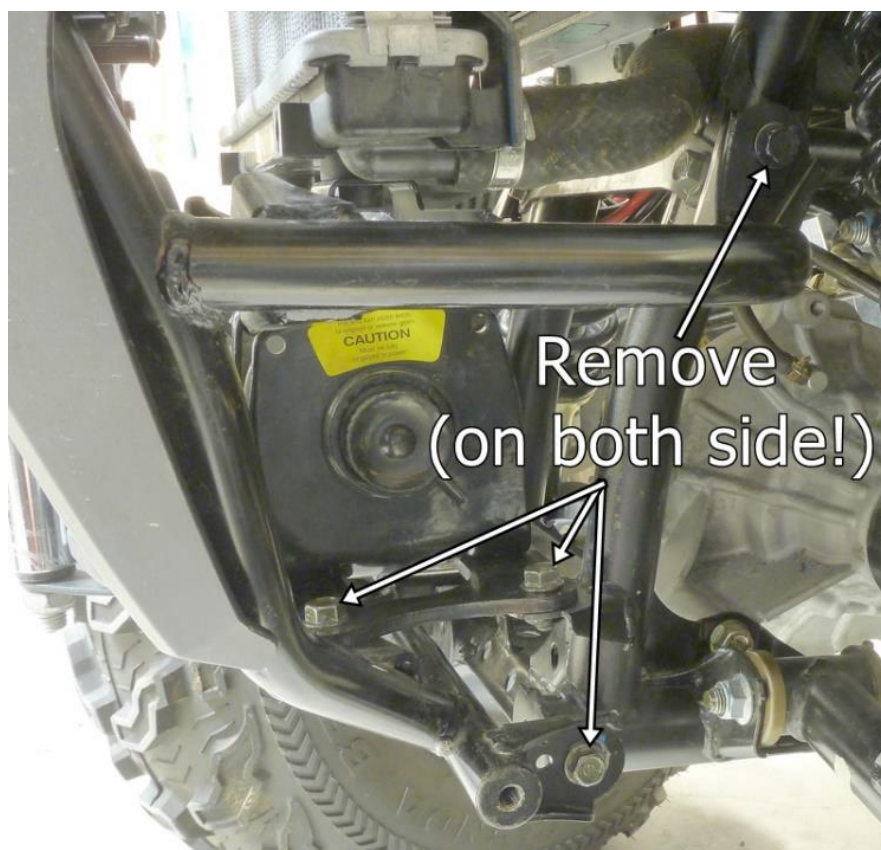
Step 1

Remove front bumper. NB! Disconnect turn signal connectors (red and white connector)!



Step 2

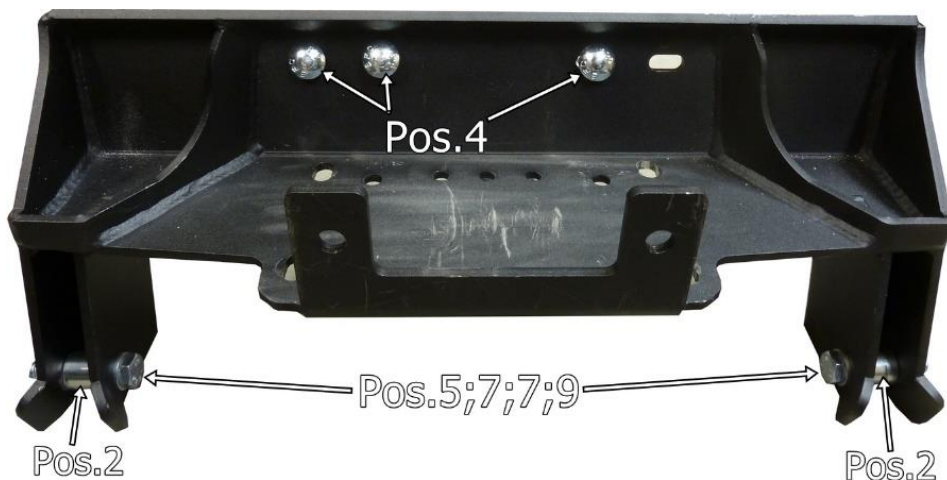
Remove ATV front frame bolts and then remove original winch with adapter.



Step 3

Install bushes 03.5906 and place 3 carriage bolts Pos.4 to the adapter. Pay attention to Pos.5 bolt direction! (from inside to outside!). Install winch to the adapter, use original bolts.

NB! Make sure that winch electrical connectors won't hit adapter, if necessary change the position of connectors (see winch manual or contact your winch reseller).



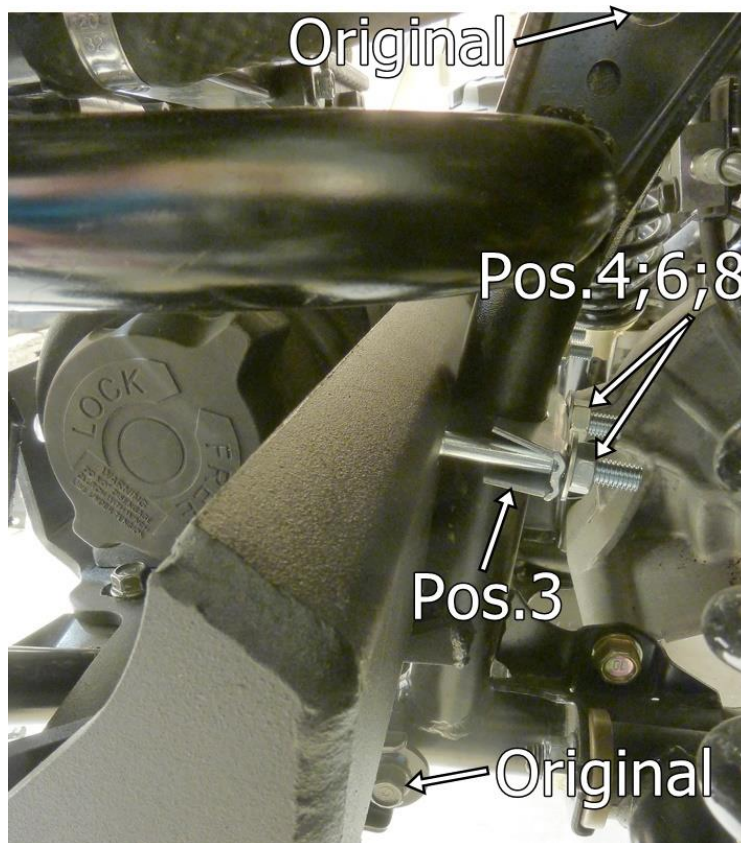
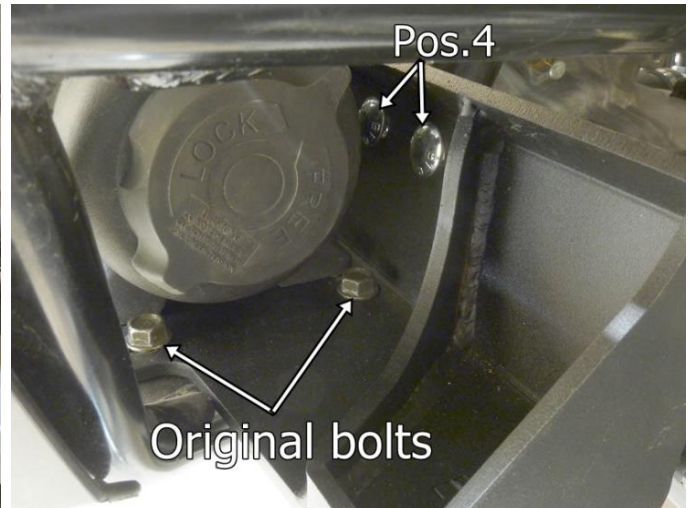
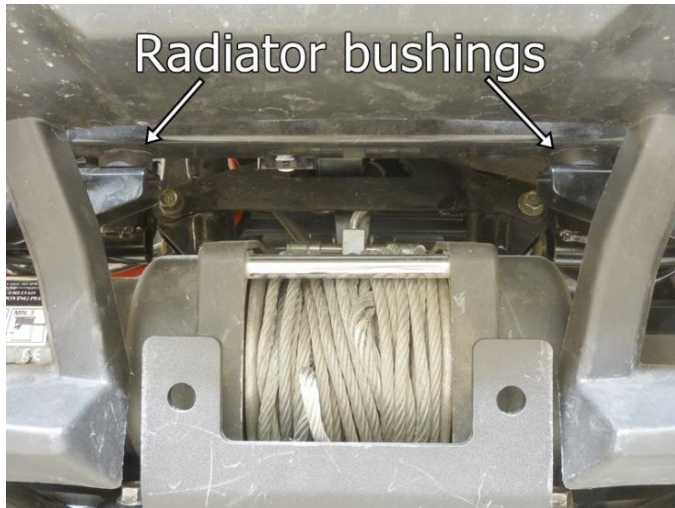
Step 4

Pull the subframe gently away from ATV and place the winch with adapter between ATV subframe.



Step 5

Reinstall ATV subframe and winch adapter. Make sure that radiator bottom rubber bushing goes back to the slot on the subframe!



Step 6

Install winch fairlead.

Step 7

Reinstall front bumper and connect turn signal connectors. See Step 1.

IRON BALTIC

IRON BALTIC OÜ
Joa tee 17
Vääna 76903
Estonia / Europe

+372 6 533 711
sales@ironbaltic.com

www.ironbaltic.com
www.facebook.com/ironbaltic
www.youtube.com/user/ironbalticLtd

